

# Towel Topper

## Recommended fabrics.

The choice of fabric depends on your preferences.

I use eco-leather and felt with a thickness of 0.6-0.85 mm. You can also use cotton linen, satin.

The filler – rubber foam with a thickness of 5 mm or polyester batting 80 or 100.

Also need the buttons, webbing for the loop.

Cut the fabric, lining and batting the size and quantity according to the table.

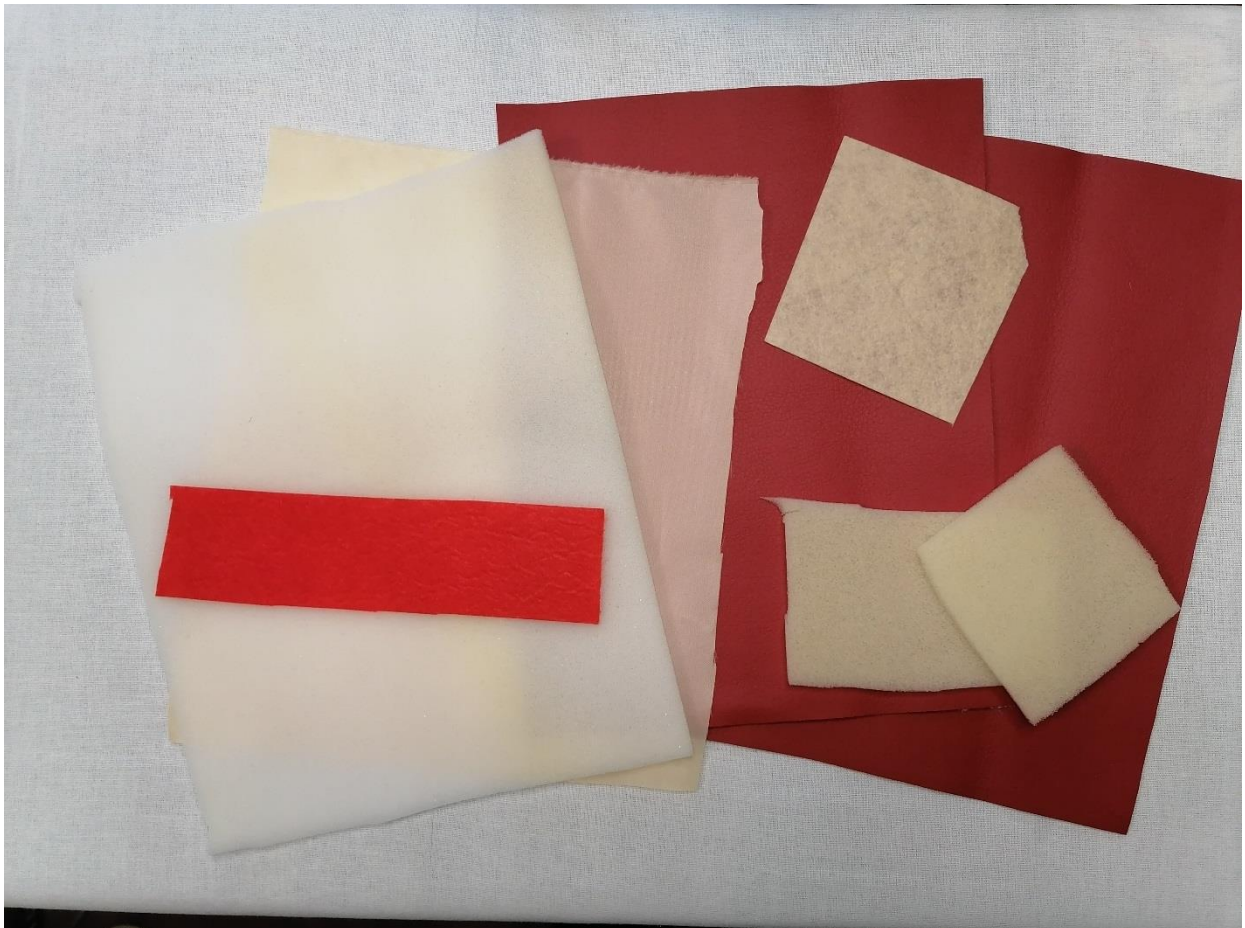
The main fabric - 2 pieces

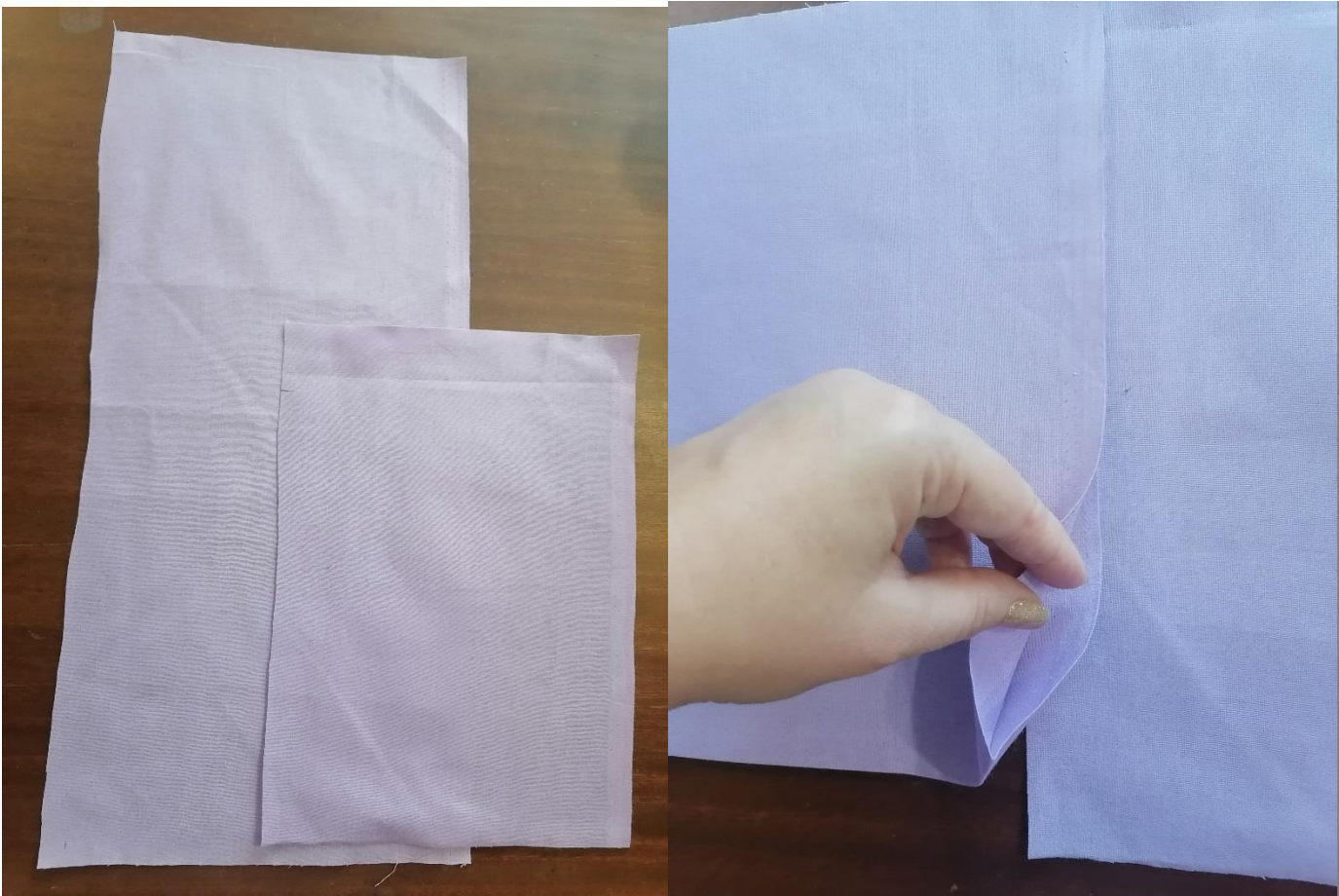
The lining and batting - 1 piece each

The small pieces - 2 batting and 1 beige fabric for the nose

The strip of felt (I recommend using felt) to place towels

**Pay attention** if you use linen, cotton or similar fabrics. Take 1 piece of the size according to the table, and the second is 2 times longer in length. Fold this piece in half and iron.





file name/ size of design		the main fabric lining, batting		the felt, - 1 piece for places towel	
inches		inches		inches	
width	height	width	height	width	height
2,85	3,87	4,42	4,66	4,42	0,80
4,84	6,59	6,41	7,38	6,41	1,30
5,42	7,39	6,99	8,18	6,99	1,40
6,24	8,49	7,81	9,28	7,81	1,50
7,04	9,59	8,61	10,38	8,61	1,60
7,79	10,62	9,36	11,41	9,36	1,70
mm		mm		mm	
width	height	width	height	width	height
72,39	98,30	112	118	112	20
122,94	167,39	163	187	163	33
137,67	187,71	178	208	178	36
158,50	215,65	198	236	198	38
178,82	243,59	219	264	219	41
197,87	269,75	238	290	238	43



Download the archive to your computer. Extract the files from the archive.

Download file to your embroidery machine in the way you are used to.

File 1 with snowflakes	File 2 with flowers
	

Options for hanging towels

Short loop	
	



**Long loop and button at the back**



**The loop of thread and a snap on an embroidered decorative element**



**The loop of thread and button at the back**



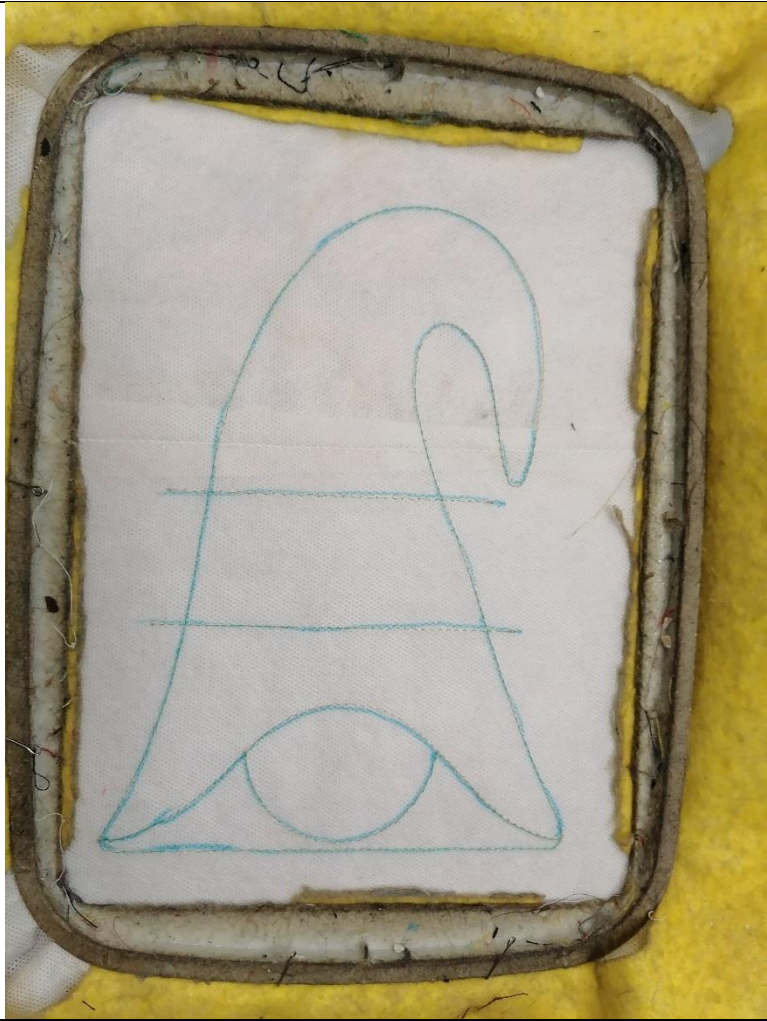


**Use it as a napkin ring**  
No loops, no batting (small size)



Hoop tearaway or water-soluble stabilizer.

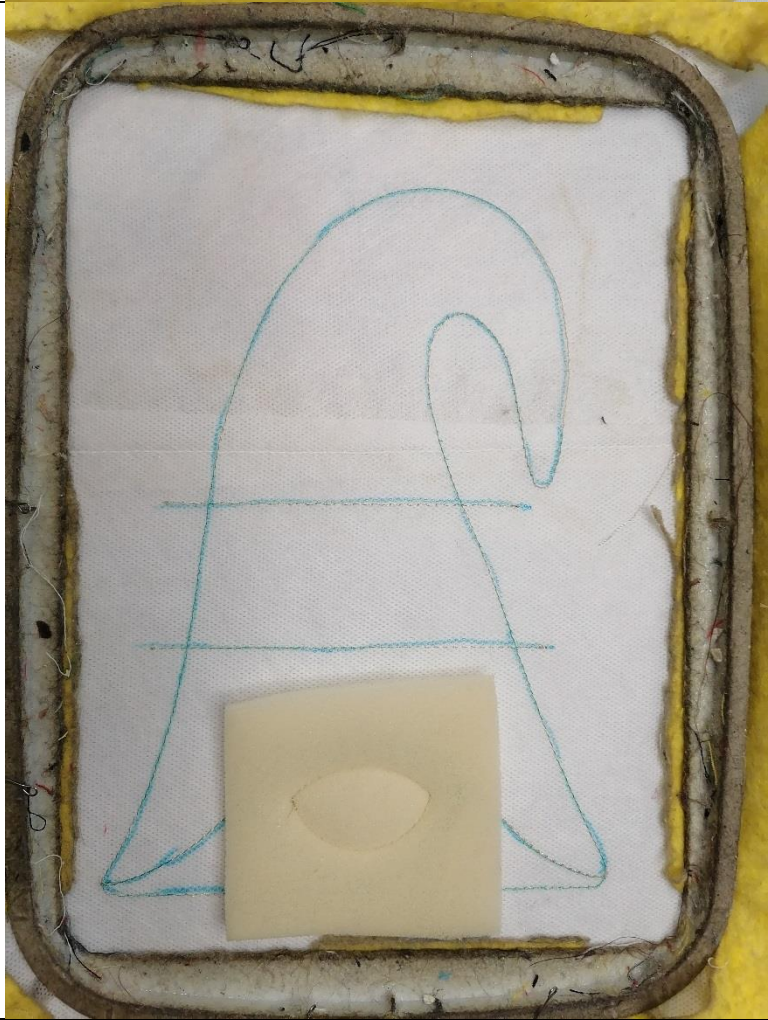
Stitch Color 1 - the placement line for design





Put the small piece polyester batting on the oval area. This is the nose.

You can use temporary fixation glue.



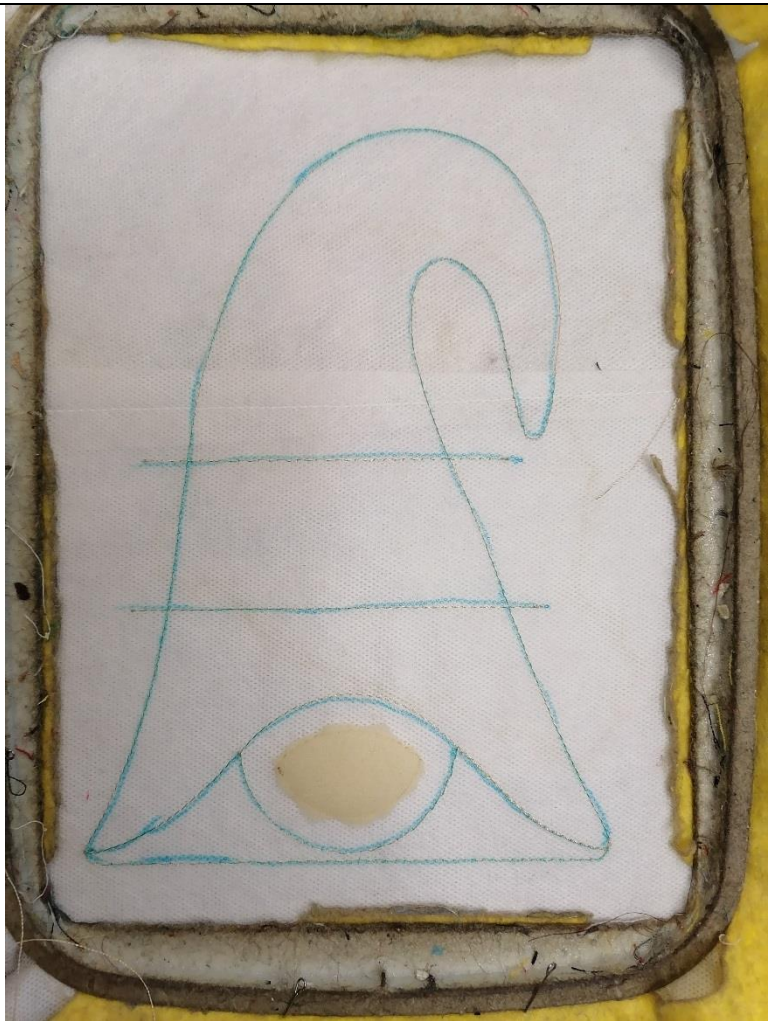
Stitch Color 2

I designed 2 layers for the nose to make the nose more voluminous.

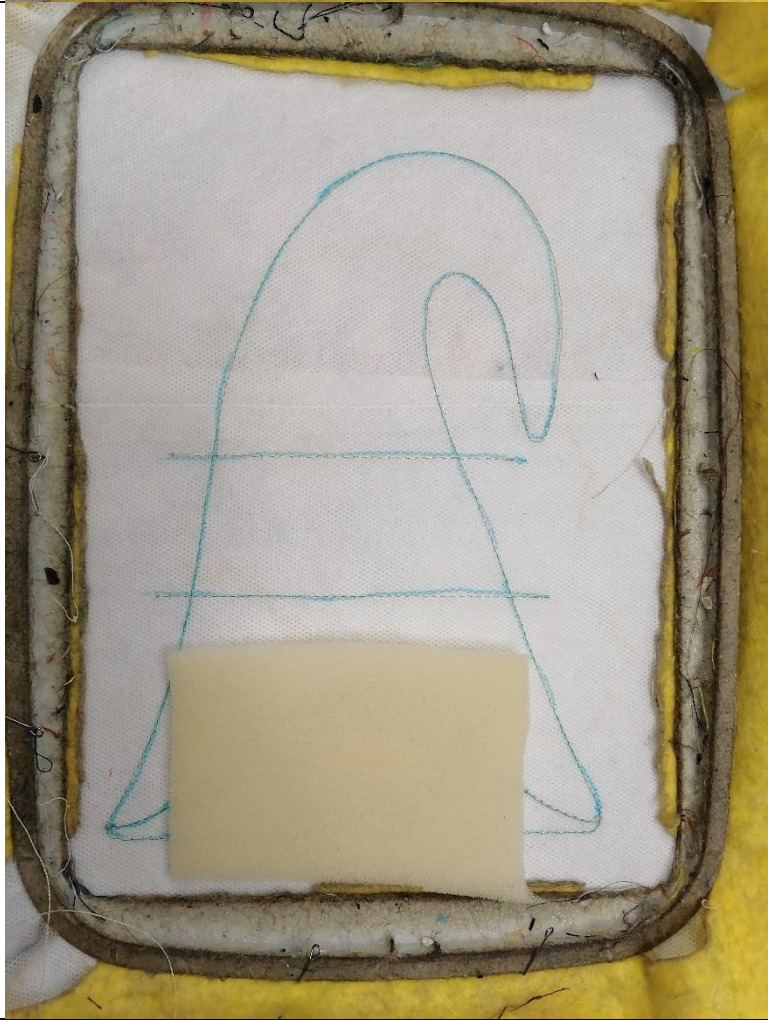
You can skip these steps.  
Do not embroider 2 or 3 colors and do not add batting. And the nose will be flat.

I recommend doing this for a small size.



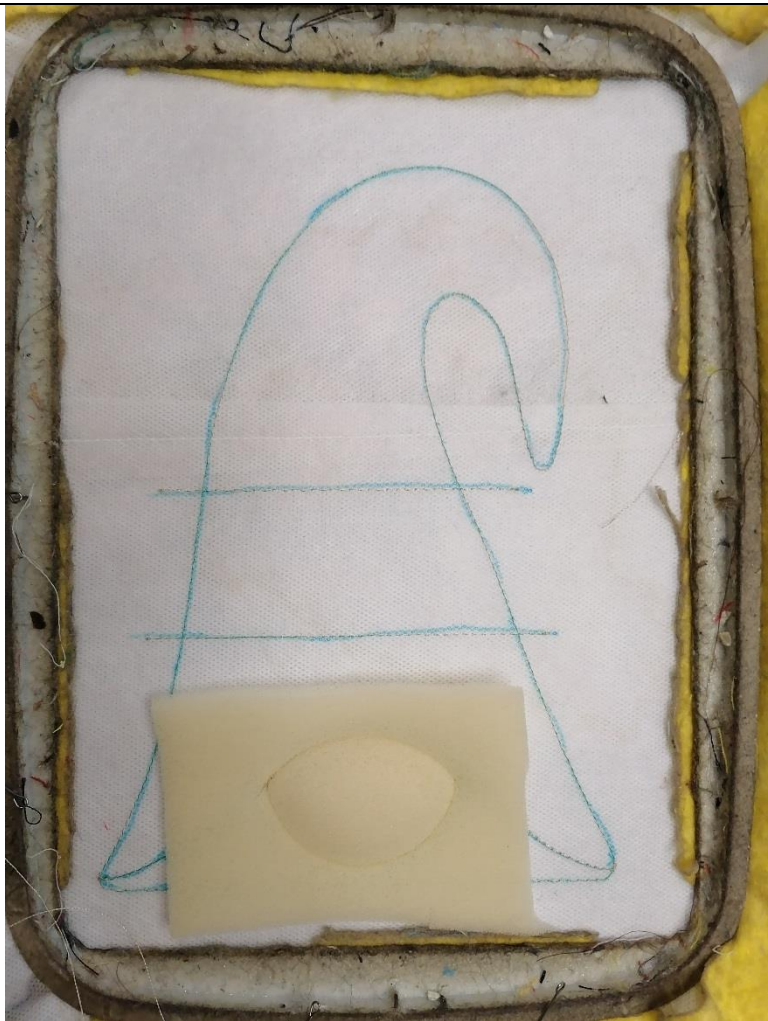


Cut off the exceed the polyester batting around the stitching.

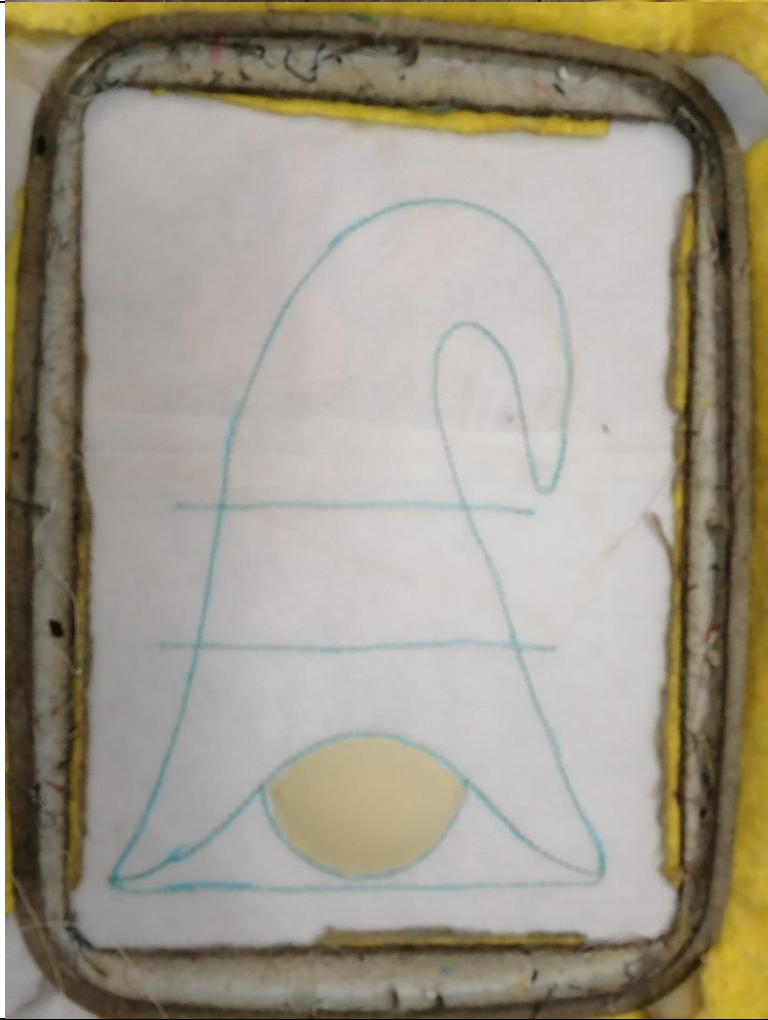


Put the small piece polyester batting on the oval area again.

You can use temporary fixation glue.



Stitch Color 3



Cut off the exceed the polyester batting around the stitching.

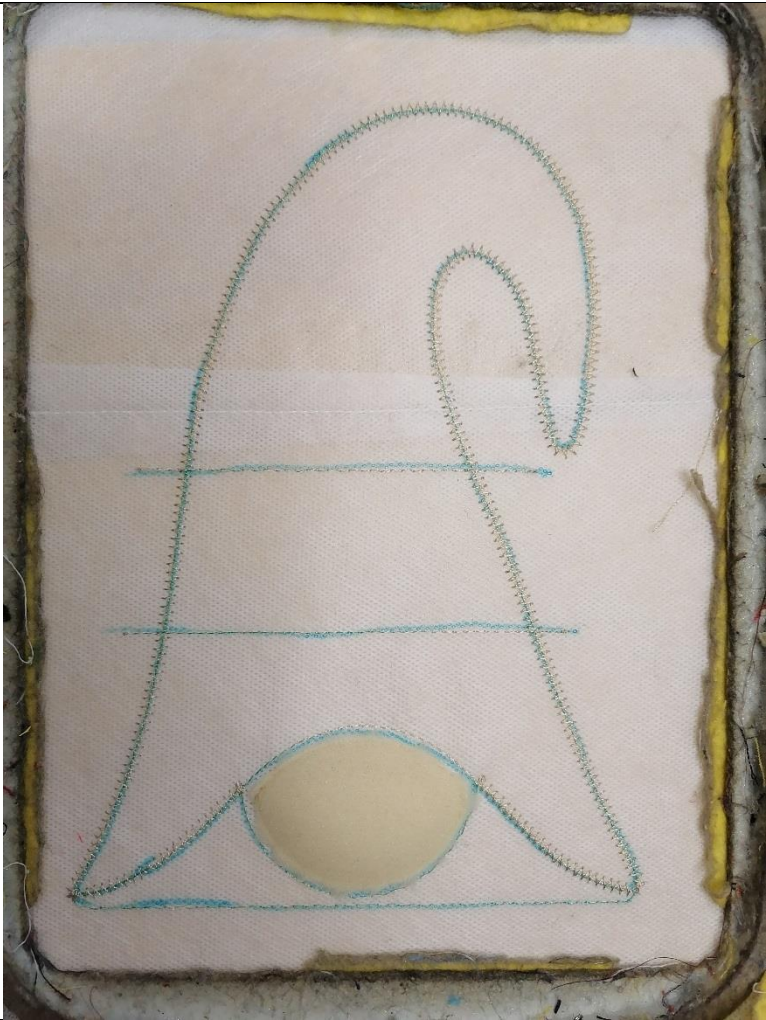




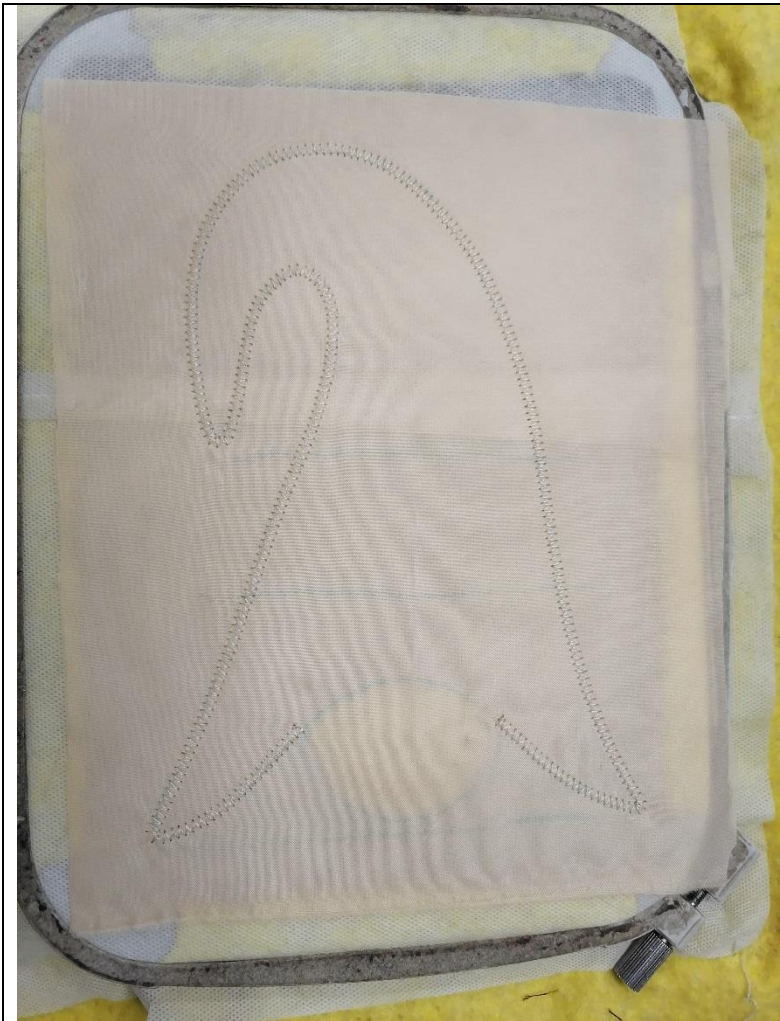
Turn the hoop over so the wrong side is up.

Place Lining right side up.

You can use temporary fixation glue



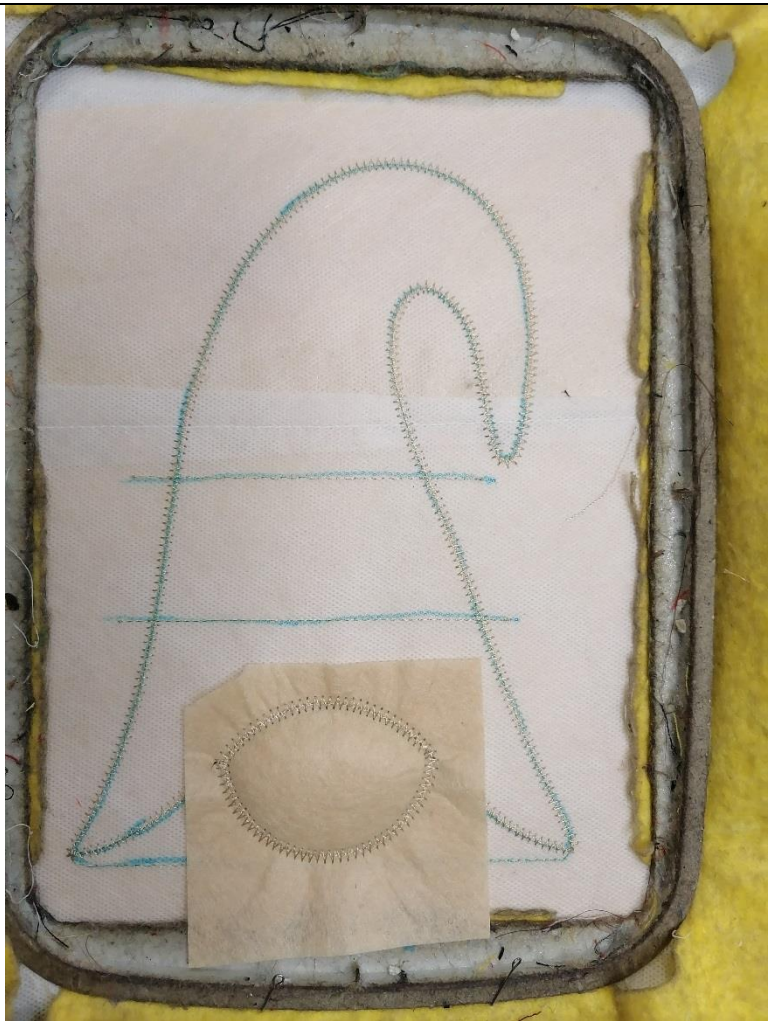
Stitch Color 4 - fixing the lining and zigzag for cutting



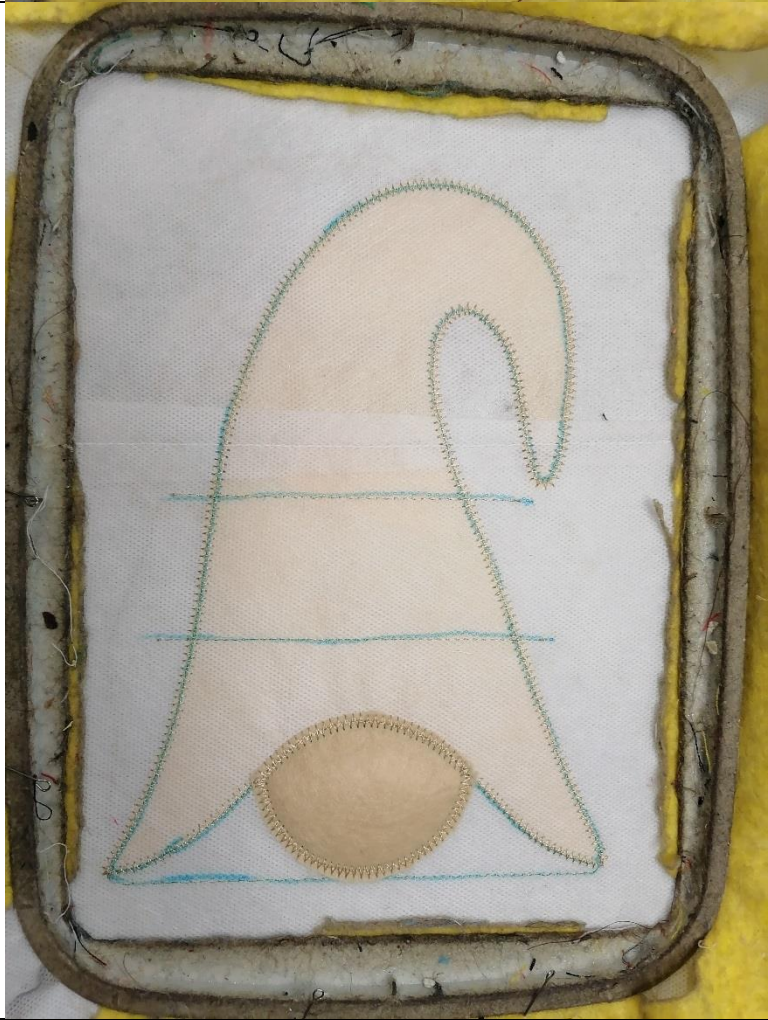
Put the piece of material for nose







Stitch Color 5 - zigzag for cutting



Cut off the exceed fabric close to the stitch on both sides of the hoop.



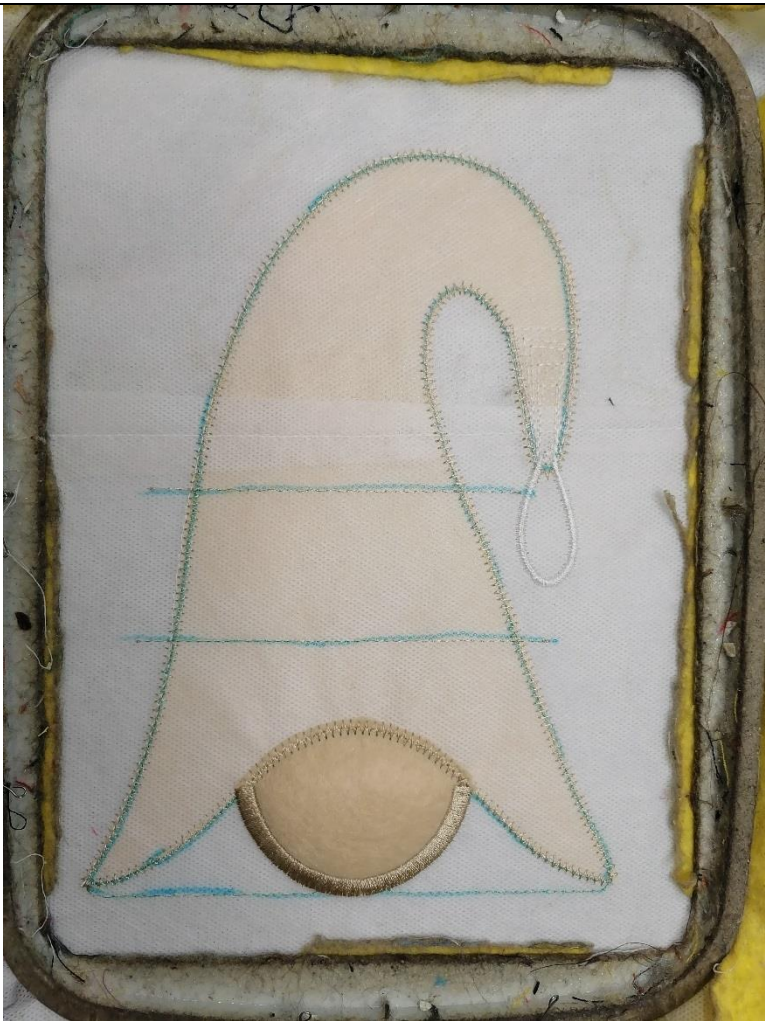


Cut off the exceed fabric close to the zigzag stitch on both sides of the hoop.



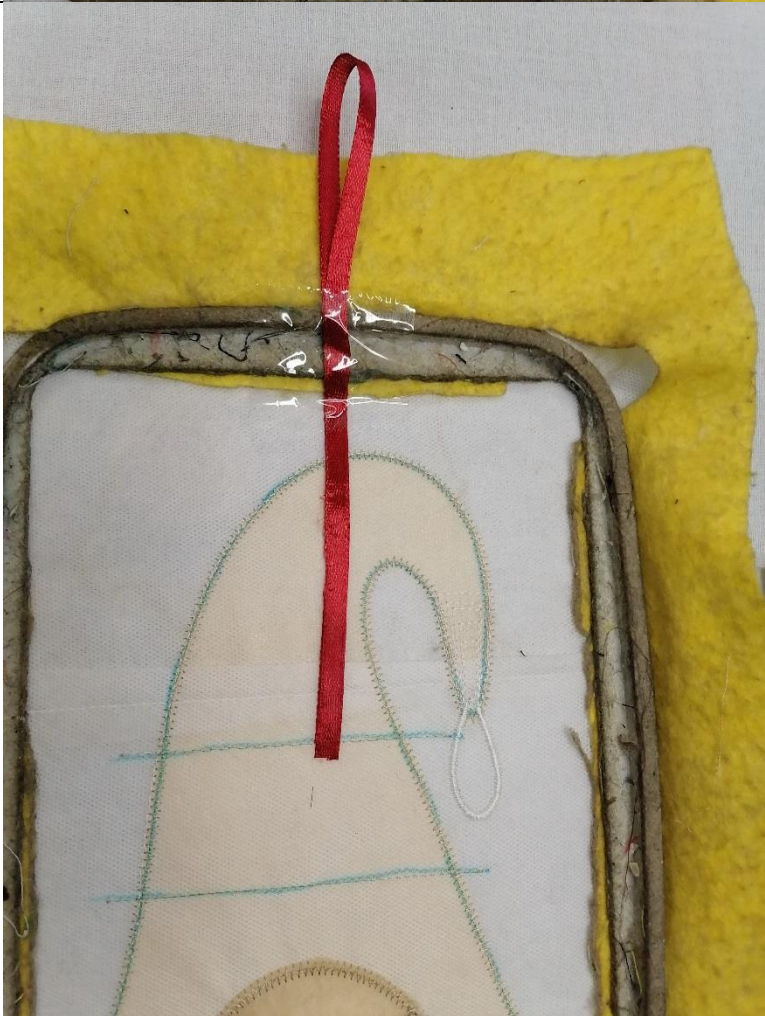
Stitch Color 6 - satin border





Stitch Color 7 – the loop.  
If necessary.

If you don't need such a loop, don't  
embroider this color.



Add a loop of ribbon at this stage.  
If you make an option with such a loop.



Put polyester batting.

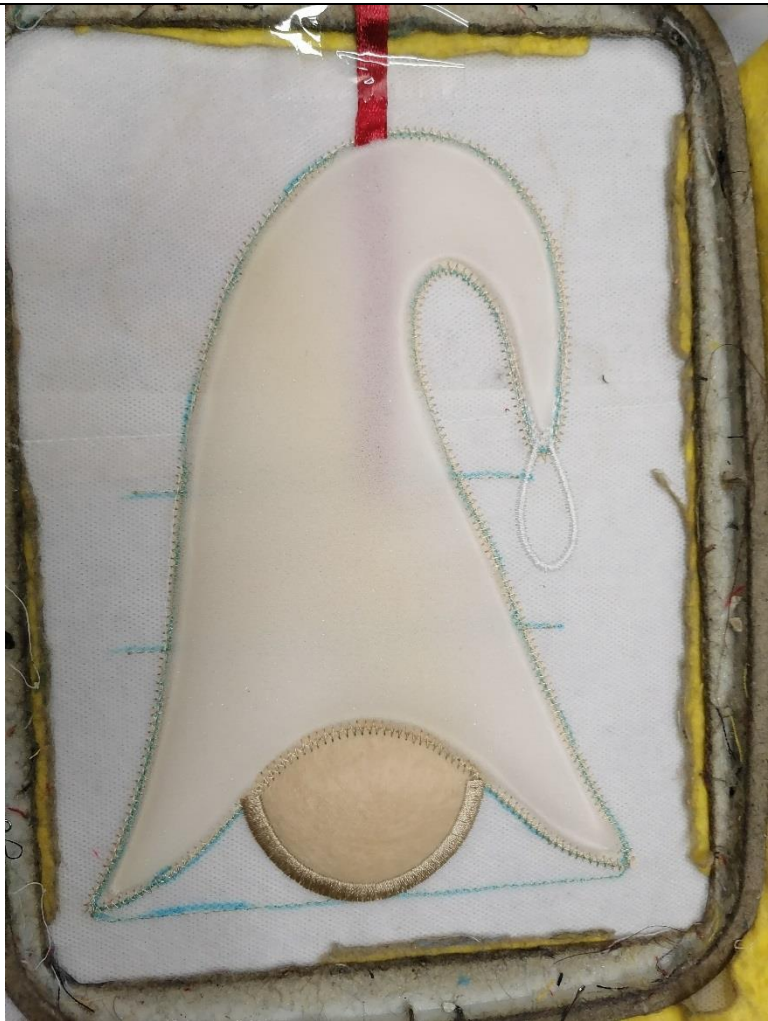
You can use temporary fixation glue

Optional.  
If you will not do trapunto, skip  
this step.



Stitch Color 8





Cut off the excess polyester batting around the stitching.



Put the main fabric face up.  
You can use temporary fixation glue





Stitch Color 9 - fixing the fabric and zigzag for cutting



Stitch Color 10

You can skip this color and the hat will be without a pattern. Or add your own pattern.

skip color 10



file 2





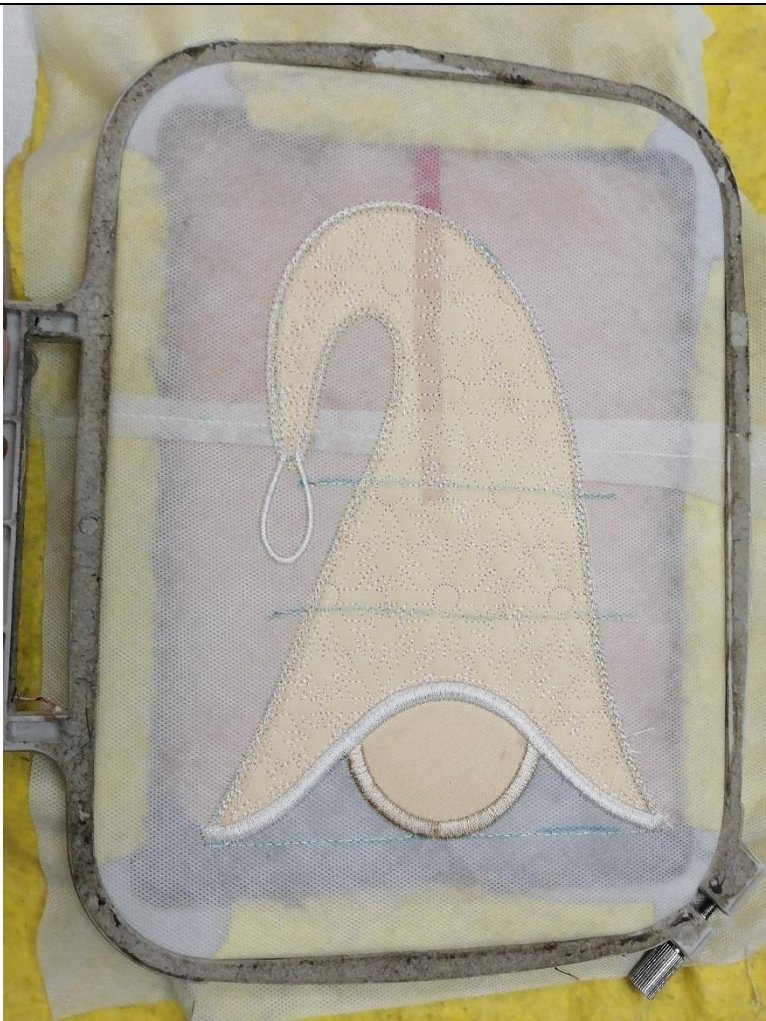


Cut off the exceed material around near zigzag stitch only



Stitch Color 11- satin border





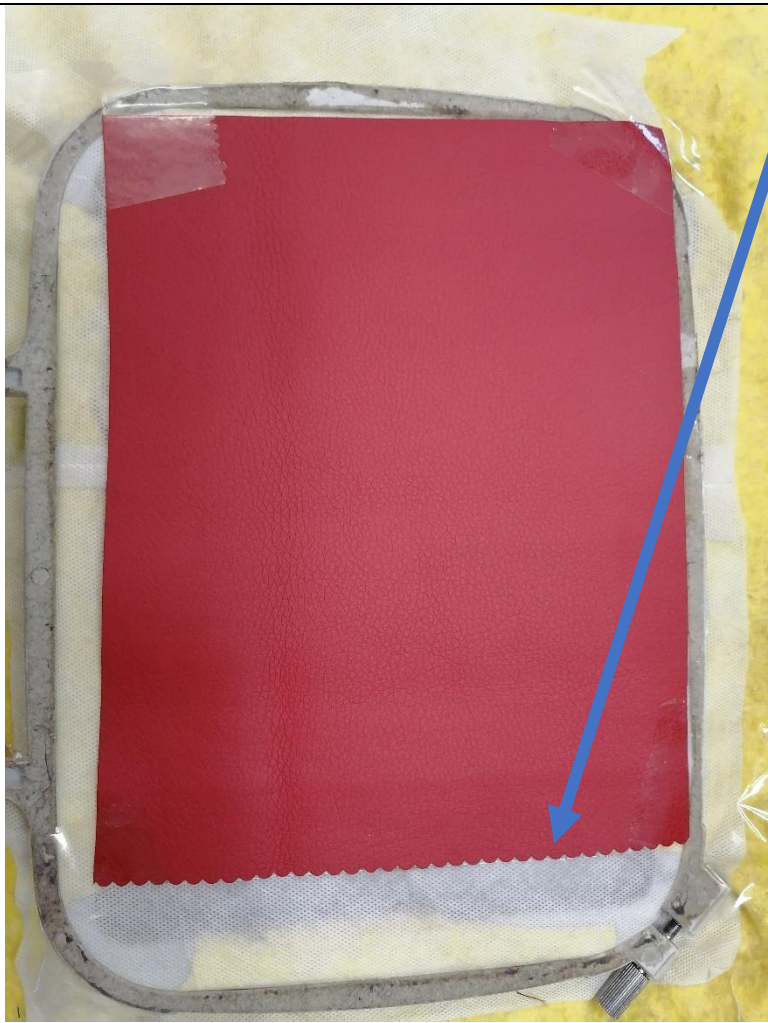
Turn to the back side.



Place a strip of felt.

Fix the adhesive tape

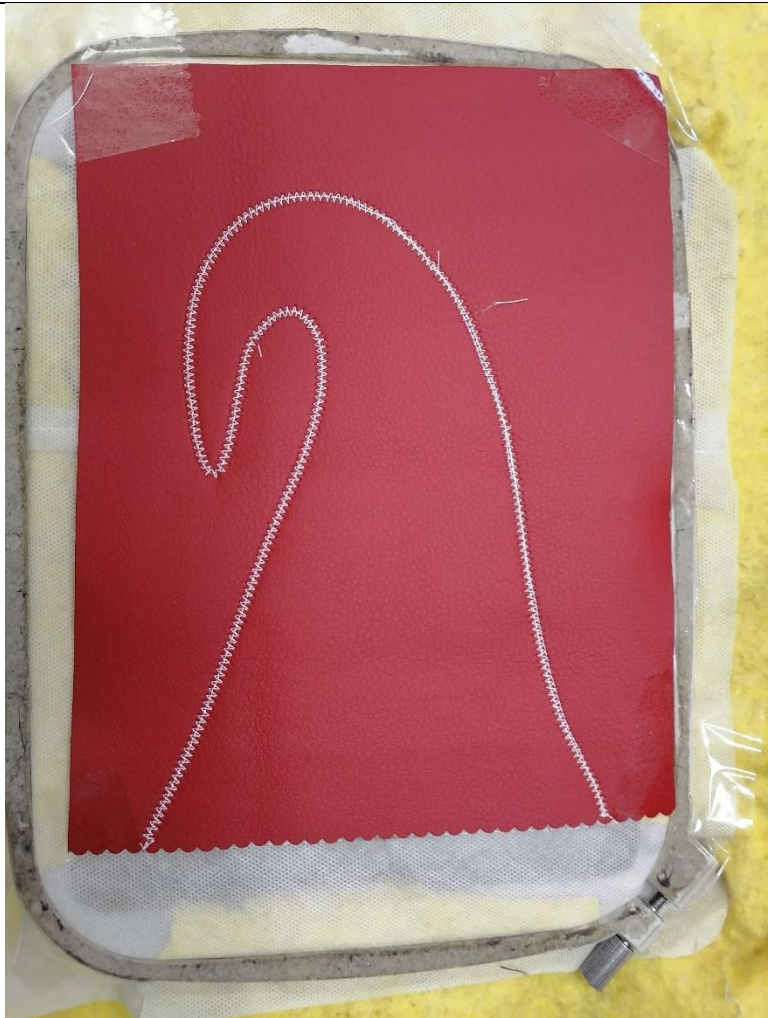




Put the cut of the main fabric on the bottom stitching, wrong side up

Fix the adhesive tape  
DON'T USE glue spray

If you use fabric, put the folded edge of the main fabric on the bottom stitching



Stitch Color 12 - zigzag for cutting

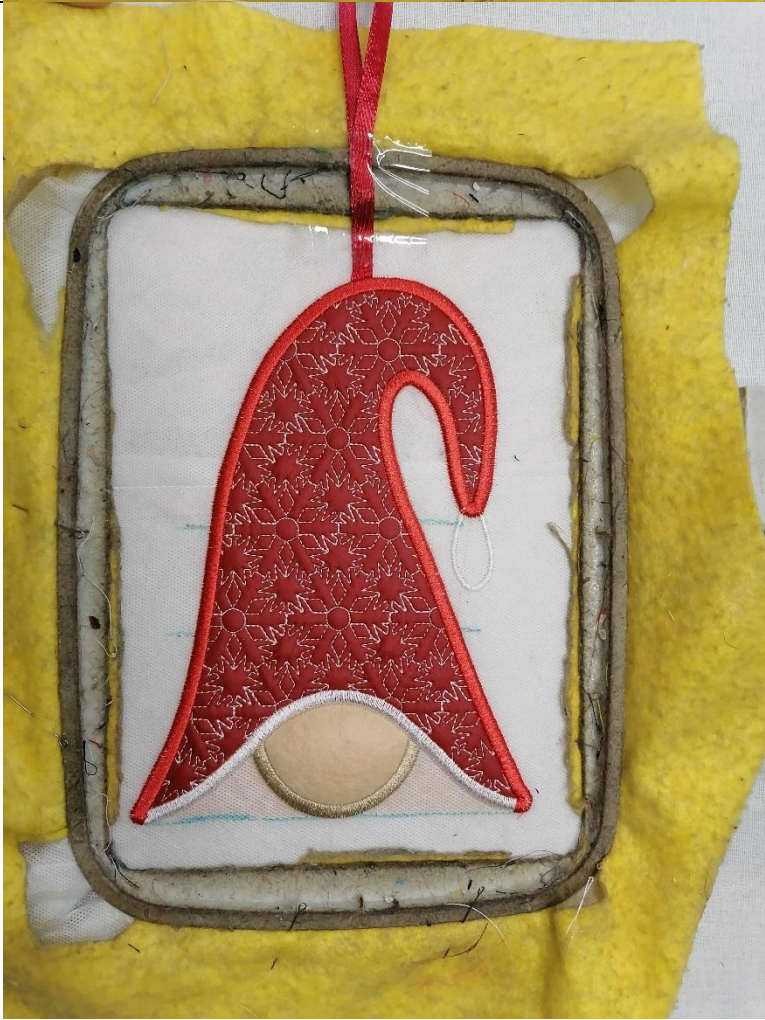




Cut off the exceed material around zigzag stitch on both sides of the hoop.







Stitch Color 13 - satin border





Cut stabilizer. Remove the stabilizer residues with a wet sponge



Sew the button or Install the buttons as in the photo.

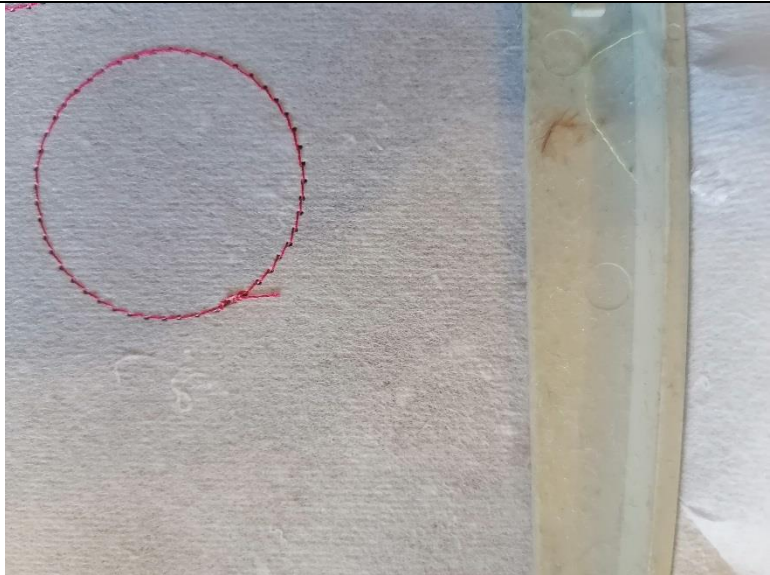
If necessary.  
Depending on the method of hanging the towel







**Snowflake and flower**



Stitch Color 1



Stitch Color 2







Trim to about the seams 1/8" (2-3 mm)



For this  
I didn't embroider colors 2, 3, 7, 8, 10









