

LOW TRUCK


Main Materials





- White Acrylic Felt (used extensively as a base and backing)
- Fleece (used as an initial layer on stabilizer for softness and texture)
- Assorted Felt or Fabric Pieces (various colors and textures used throughout the project for different elements like the truck, bunny, carrots, etc.)
- Non-woven Stabilizer (foundation material for hooping and stitching)
- Plastic (optional) (mentioned once, possibly for windows or glossy accents)
- Embroidery Thread (for all decorative stitching and details)
- Embroidery Design File: MEITHBDZ122 by Mira Embroidery

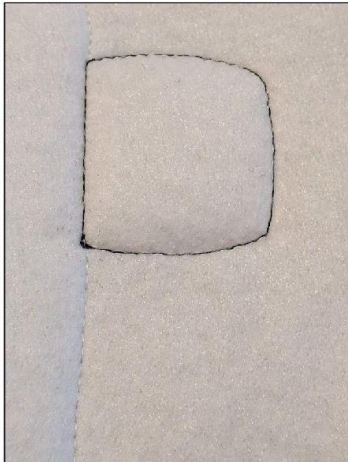
Assembly/Finishing Materials

- Glue (used for final assembly of the layered elements)
- Ribbon (for hanging or decorative purposes, passed through a small ring)
- Small Ring (to attach ribbon for hanging)
- Tape (for securing the ribbon or ring)
- Decorative Embellishment (like a small heart for finishing touches, optional)

LOW TRUCK

		
Seam 1: this seam is done on your non-woven stabilizer	Put your fleece on the seam	Seam 2: this seam will hold your fleece on your stabilizer

		
<p>Cut excess fleece all the way around</p>	<p>Put your white felt Acrylic</p>	<p>Seam 3: this seam will hold your felt on your stabilizer. "DO NOT CUT THE EXCESS"</p>
		
<p>Seam 4: this seam tells you the location for your felt or fabric</p>	<p>Position your felt on the seam</p>	<p>Seam 5: this seam will hold your felt in place</p> <p>Cut excess fabric all around</p>



Seam 6: This seam tells you the location for your felt or fabric



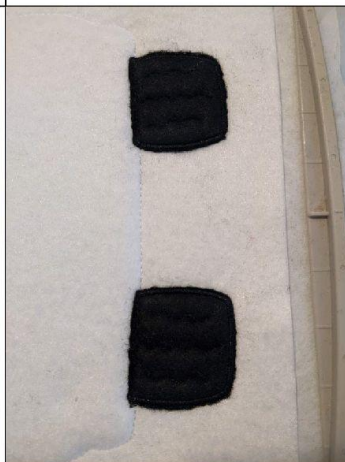
Position your felt on the seam



Seam 7: this seam will hold your felt in place



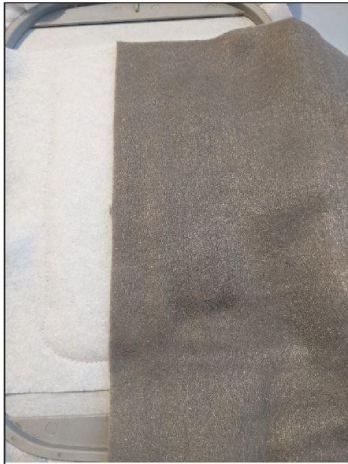
Cut excess fabric all around



Sewing 8: embroidery stitches



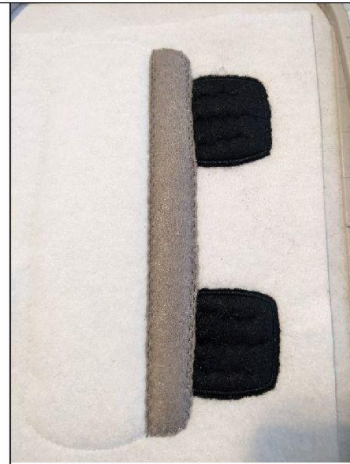
Seam 9: this stitch tells you the location for your felt or fabric



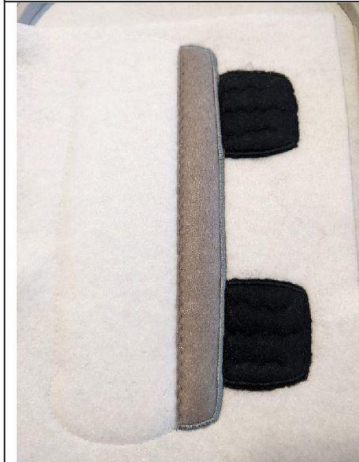
Position your felt on the seam



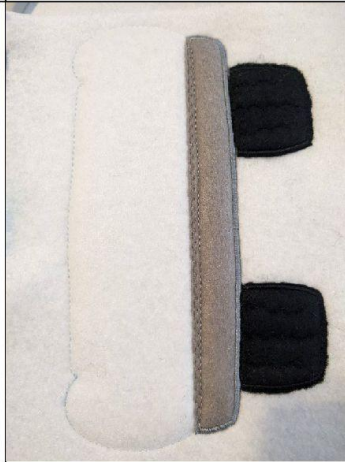
Seam 10: this seam will hold your felt in place



Cut excess fabric all around



Sewing 11: embroidery stitches



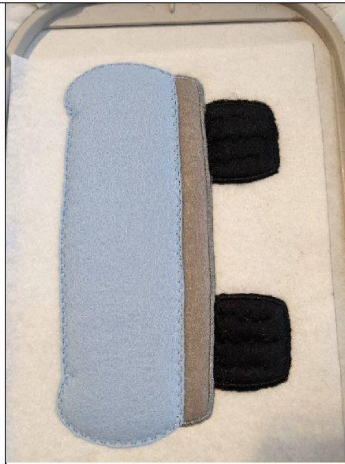
Seam 12: this seam tells you the location for your felt or fabric



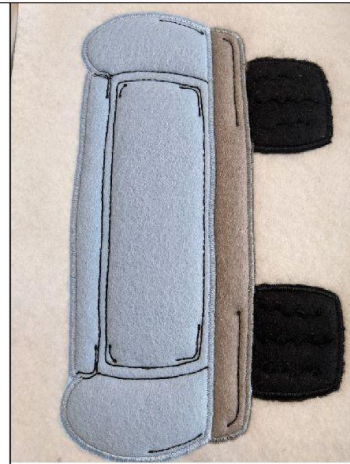
Position your felt on the seam



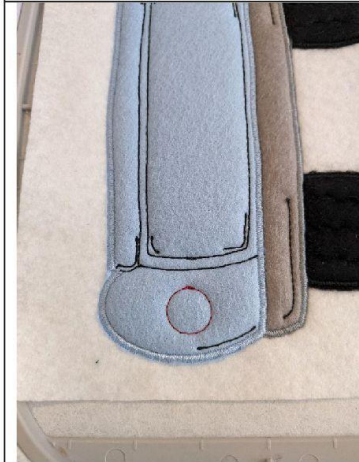
Seam 13: this seam will hold your felt in place



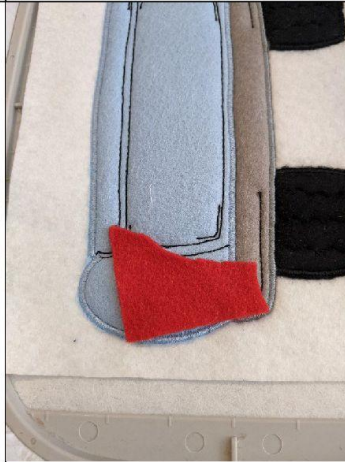
Cut excess fabric all around



Sewing 14-15: embroidery stitches



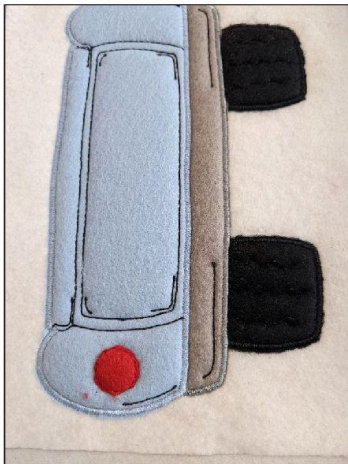
Seam 16: this seam tells you the location for your felt or fabric



Position your felt on the seam



Seam 17: this seam will hold your felt in place



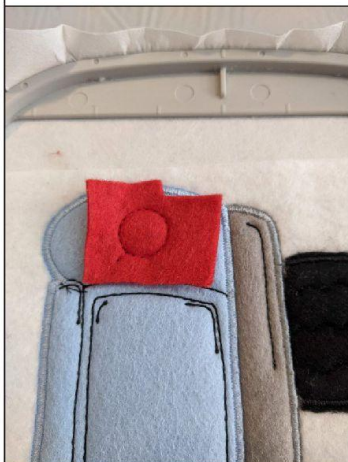
Cut excess fabric all around



Seam 18: this seam tells you the location for your felt or fabric

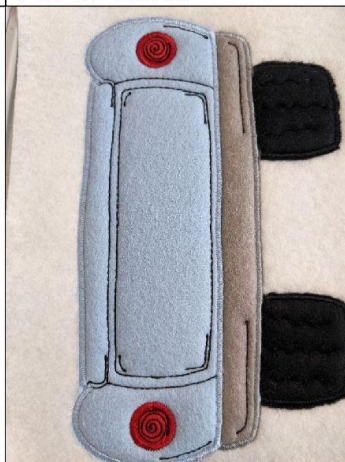


Position your felt on the seam



Seam 19: this seam will hold your felt in place

Cut excess fabric all around



Sewing 20-21: embroidery stitches



Sewing 22-23 stitches of embroidery for writing



Put your 2nd piece of white acrylic felt on the back of your project (back of the frame)

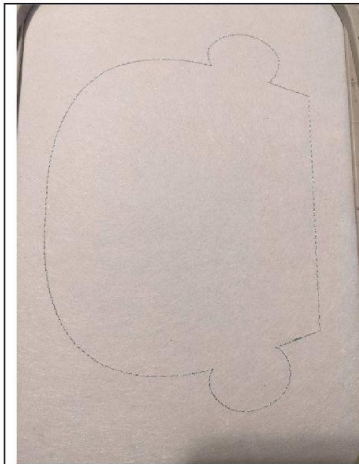


Sewing 24: this seam will join your 2 pieces of white acrylic felt together



get out of the frame and cut the excess felt all the way, set aside until mounting

TOP OF THE TRUCK



Seam 1: this seam is done on your non-woven stabilizer



Put your fleece on the seam



Seam 2: this seam will hold your fleece on your stabilizer



Cut excess fleece all the way around



Put your white felt Acrylic



Seam 3: this seam will hold your felt on your stabilizer. "DO NOT CUT THE EXCESS"



Seam 4: this seam tells you the location for your felt or fabric



Position your felt on the seam



Seam 5: this seam will hold your felt in place



Cut excess fabric all around



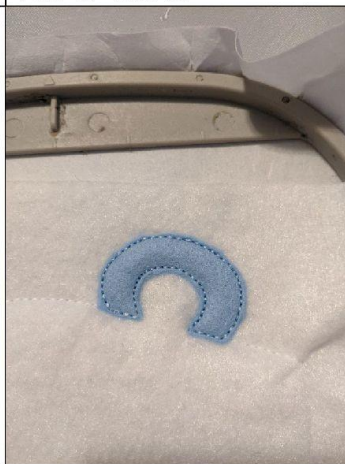
Seam 6: This seam tells you the location for your felt or fabric



Position your felt on the seam



Seam 7: this seam will hold your felt in place



Cut excess fabric all around



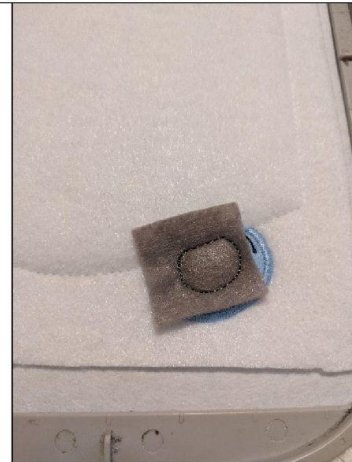
Sewing 8-9: embroidery stitches



Seam 10: this seam tells you the location for your felt or fabric



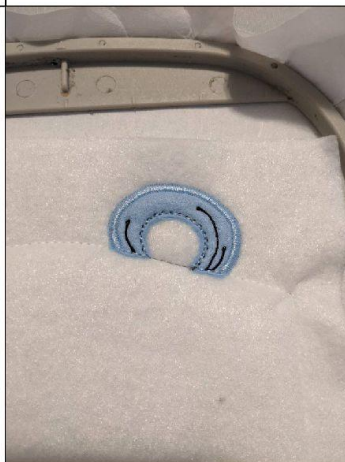
Position your felt on the seam



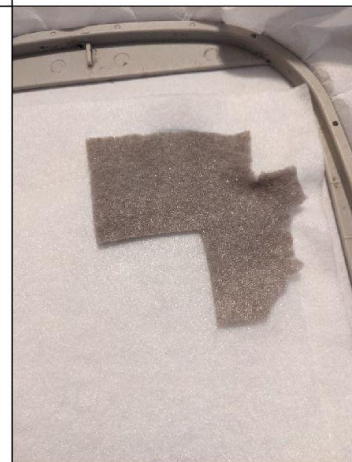
Seam 11: this seam will hold your felt in place



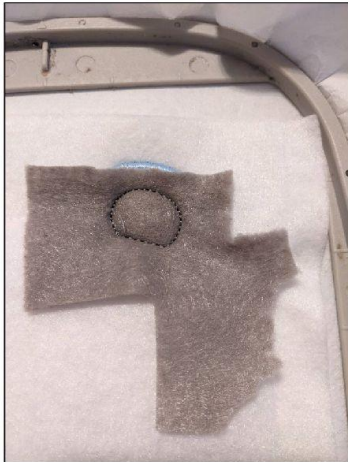
Cut excess fabric all around



Seam 12: this seam tells you the location for your felt or fabric



Position your felt on the seam



Seam 13: this seam will hold your felt in place

Cut excess fabric all around



Sewing 14: embroidery stitches



Seam 15: this seam tells you the location for your felt or fabric



Position your felt and plastic (optional) on the seam



Seam 16: this seam will hold your felt in place



Cut excess fabric all around



Seam 17: this seam tells you the location for your felt or fabric



Position your felt on the seam



Seam 18: this seam will hold your felt in place



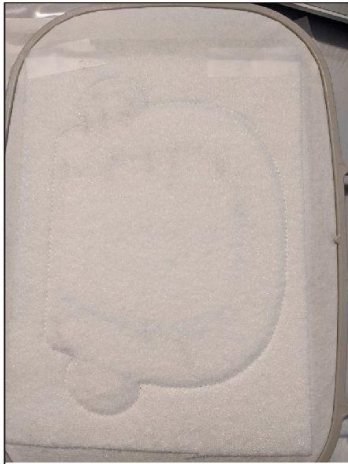
Cut excess fabric all around



Sewing 19-20: embroidery stitches



Put your 2nd piece of white acrylic felt on the back of your project (back of the frame)

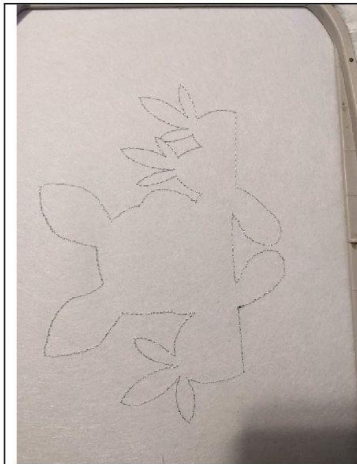


Couture 21: this seam will join your 2 pieces of white acrylic felt together



get out of the frame and cut the excess felt all the way, set aside until mounting

RABBIT WITH CARROTS



Seam 1: this seam is done on your non-woven stabilizer



Put your fleece on the seam



Seam 2: this seam will hold your fleece on your stabilizer



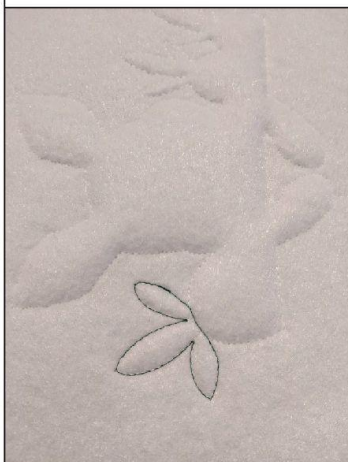
Cut excess fleece all the way around



Put your white felt Acrylic



Seam 3: this seam will hold your felt on your stabilizer. "DO NOT CUT THE EXCESS"



Seam 4: this seam tells you the location for your felt or fabric



Position your felt on the seam



Seam 5: this seam will hold your felt in place



Cut excess fabric all around



Seam 6: This seam tells you the location for your felt or fabric



Position your felt on the seam



Seam 7: this seam will hold your felt in place

Cut excess fabric all around



Sewing 8-9: embroidery stitches



Seam 10: this seam tells you the location for your felt or fabric



Position your felt on the seam



Seam 11: this seam will hold your felt in place



Cut excess fabric all around



Seam 12: this seam tells you the location for your felt or fabric



Position your felt on the seam



Seam 13: this seam will hold your felt in place



Cut excess fabric all around



Sewing 14-15:
embroidery stitches



Seam 16: this seam tells
you the location for your
felt or fabric



Position your felt on the
seam



Seam 17: this seam will
hold your felt in place

Cut excess fabric all
around



Sewing 18-19-20:
embroidery stitches



Seam 21: this seam tells you the location for your felt or fabric



Position your felt on the seam



Seam 22: this seam will hold your felt in place



Cut excess fabric all around



Seam 23: this seam tells you the location for your felt or fabric



Position your felt on the seam



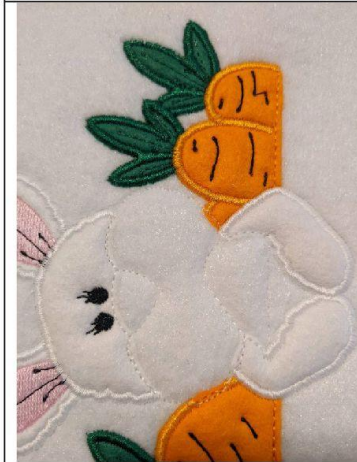
Seam 24: this seam will hold your felt in place



Cut excess fabric all around



Sewing 25: embroidery stitches



Seam 26: this seam tells you the location for your felt or fabric



Position your felt on the seam



Seam 27: this seam will hold your felt in place



Cut excess fabric all around



Sewing 28-29:
embroidery stitches



Seam 30: this stitching
tells you the location for
your felt or fabric



Position your felt on the
seam



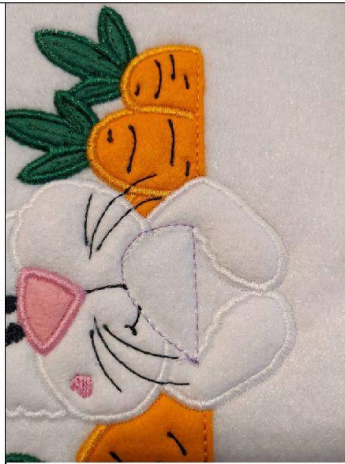
Seam 31: this seam will
hold your felt in place



Cut excess fabric all
around



Couture 32: embroidery stitches



Seam 33: this seam tells you the location for your felt or fabric



Position your felt on the seam



Seam 34: this seam will hold your felt in place



Cut excess fabric all around



Sewing 35: embroidery stitches



Put your 2nd piece of white acrylic felt on the back of your project (back of the frame)



Couture 36: this seam will join your 2 pieces of white acrylic felt together



get out of the frame and cut the excess felt all the way, set aside until mounting

ASSEMBLY



Cut on each side of the arms, taking care not to cut the bumblebee point on the side of the arms.



Start by gluing the center under the arms (egg)



Stick on each side (carrot section)



Fold the rabbit's arms over the bottom of the truck



Stick the top of the truck on the back of the bottom of the truck



Cut your tape length, pass through the small ring



Stick your ribbon with the small ring on the center of the back of your project



I cut a small heart for a beautiful finish