

Decorated Fruit Potholders



This document contains instructions and color charts for making the Decorated Fruit Potholders.

All designs are made for the 5 x 7 hoop. This project requires 2 hoopings.

I have used contrasting colors in the design I made for these instructions. Please refer to the color charts and instruction text for correct colors.

You will need 4 pieces of fabric, 1 piece of Insul-bright and 1 piece of light weight cotton batting to complete the design. A piece of batting can be used in place of the Insul-bright.

Cut fabric

1 piece 6" x 6" for the top pocket

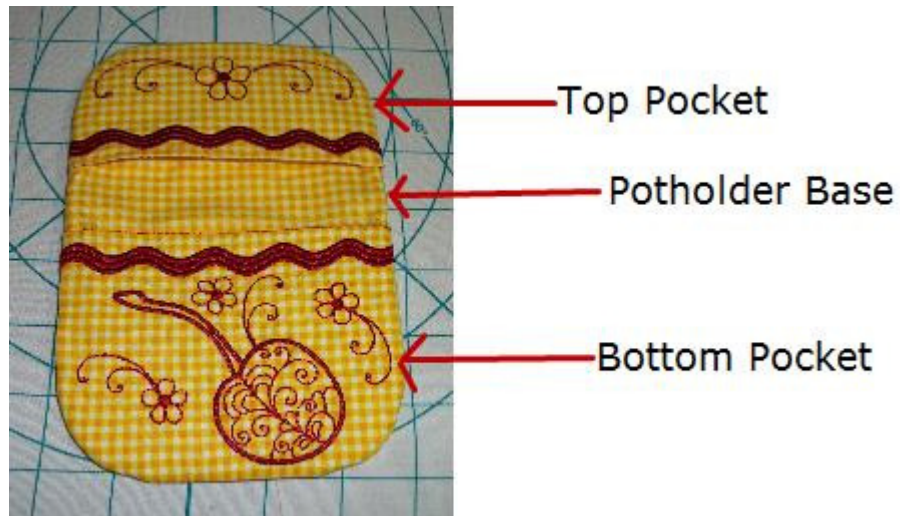
1 piece 6" x 8" for the bottom pocket

2 pieces 8" x 8" for the potholder base

Cut batting and Insul-bright pieces 8" x 8"

For stabilizer I recommend using a soft wash-away / tear-away.

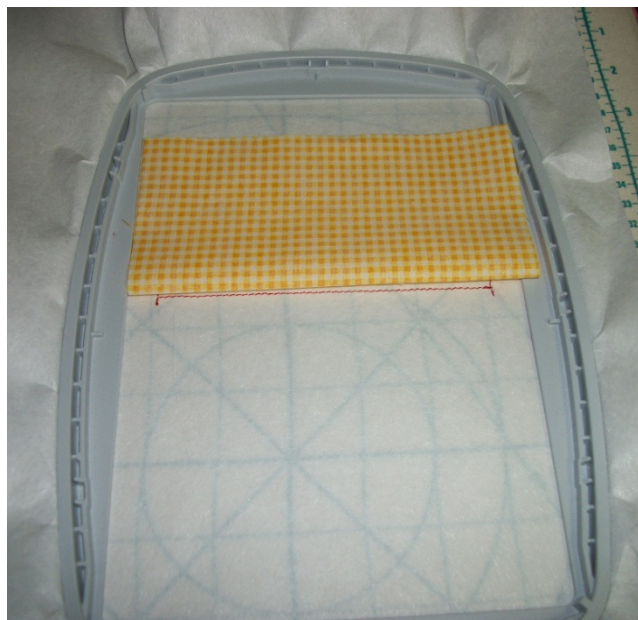
Always start by stitching the pocket pieces first. Both pocket pieces are done in one hooping. They will be added to the potholder base when you stitch that design.



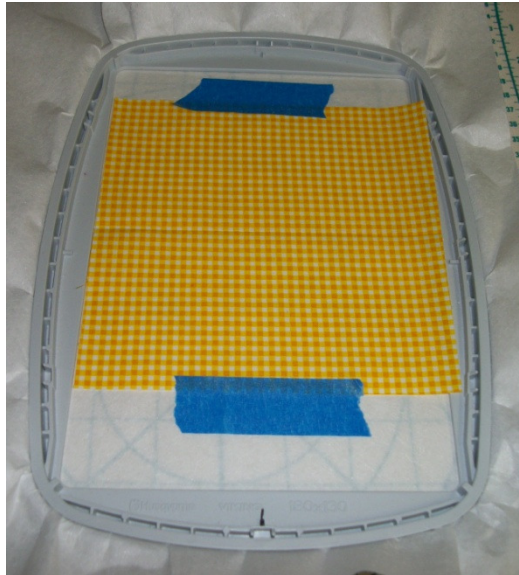
Pot Holder Pockets

Start by hooping the stabilizer. Stitch the first color, it is the fabric placement line for the top pocket. Use a thread that matches your pocket fabric.

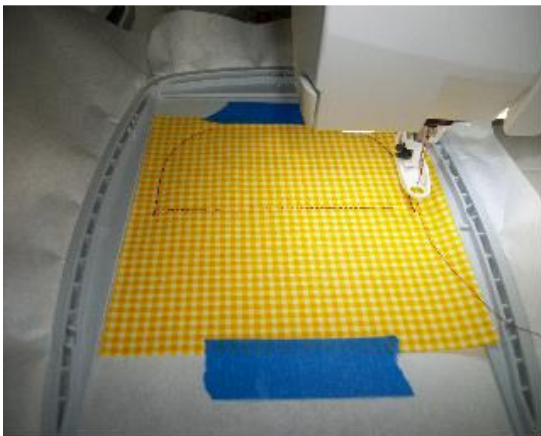
When this is done stitching take the 6 x 6 piece of pocket fabric and fold it in half right sides together. Place the folded edge of the fabric on the straight stitch line closest to the center of the hoop.



Holding it in place, unfold and tape into place. This placement does not have to be perfect but should be as close as possible.

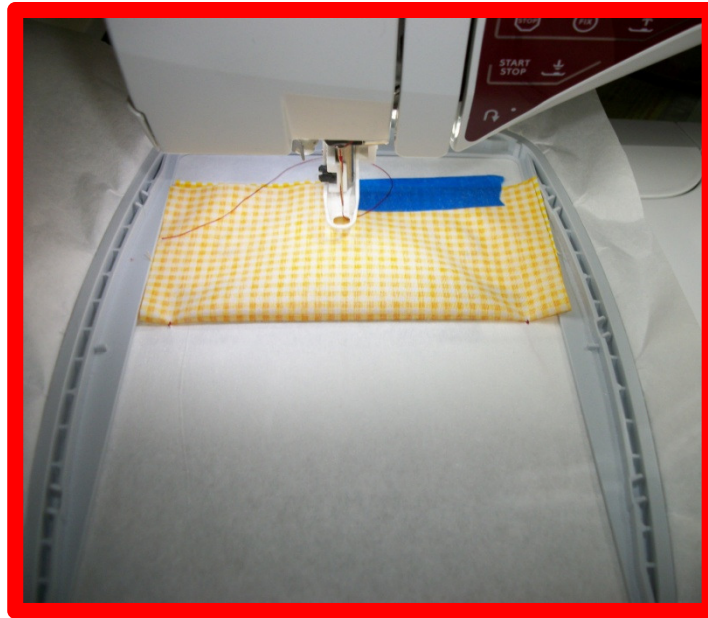


The second color to stitch will tack down the fabric. Use thread that matches the fabric. Follow the color chart for the next 3 colors to finish the top pocket.



Very Important !

Before continuing with the bottom pocket fold the extra fabric of the top pocket back over the design just stitched using a piece of tape to keep it secure. See photo below.

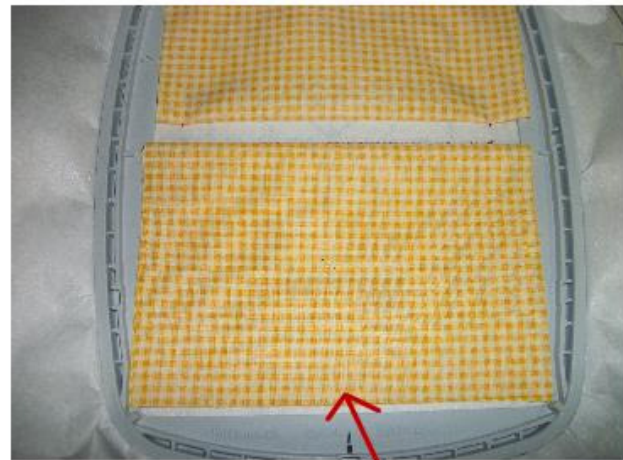


Once the fabric is taped out of the way stitch the next color which is the placement for the bottom pocket fabric. Again .. use thread that matches the fabric.

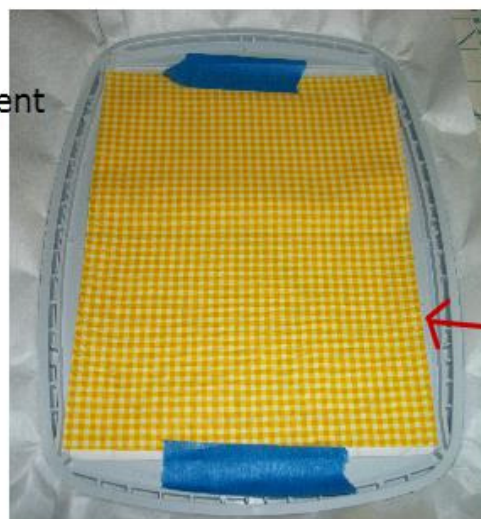
Now place the 8 x 8 piece of pocket fabric, folded right sides together.



#1 Stitch placement line.



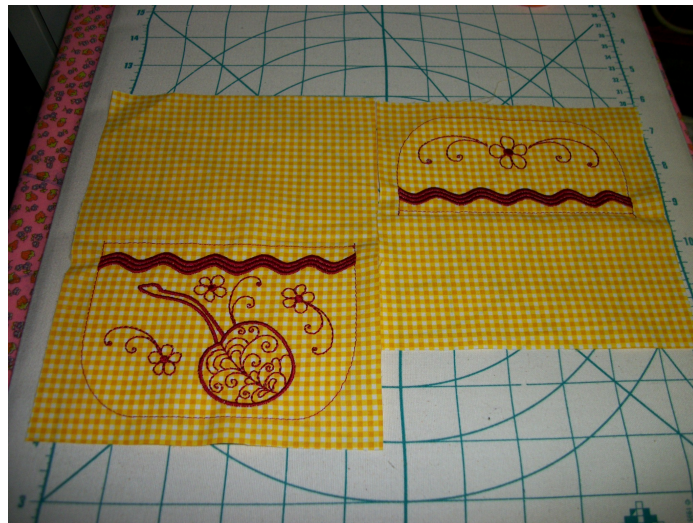
#2 Place 8 x 8 folded pocket fabric with fold on the stitch line.



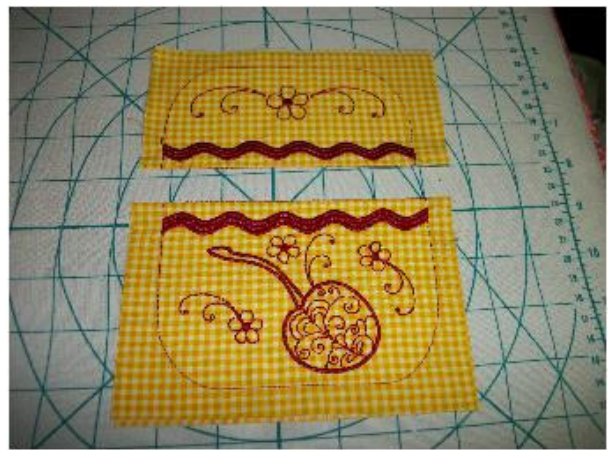
#3 Hold in place and open the fold. Tape into place.

Stitch the next color which is the tack down for the fabric. Use thread that matches the fabric. Continue stitching the design following the color chart.

When the design is done stitching remove both pieces from the hoop and tear away the stabilizer. your 2 pieces should look like this.



Fold each piece in half, wrong sides together, using the stitch line above the wave stitch as your guide. Press a good crease on the folder edge. your pocket pieces are now finished.



Set them aside for now. I turn them design side down so I remember later to add them to the pot holder base design side down.

Pot Holder Base design # ATWMAS0334-5x7

For this design use thread that matches your fabric throughout the whole design. You do Not have to use matching bobbin thread as it will not show on the completed project.

Hoop the tear-away / wash-away stabilizer and stitch the first color. This is the placement line for the Insul-bright and batting. Remove the hoop from the machine. (do NOT remove the stabilizer from the hoop) Turn the hoop upside down and tape the 8x8 piece of batting in place making sure it covers the placement line. Turn the hoop back to the top and place the Insul-bright making sure the placement line is covered. Tape into place.



Return the hoop to the machine and stitch color 2. This will tack down the insul-bright and batting. When that is done remove the hoop from the machine and trim the insul-bright and batting close to the tack down line of stitches. This will reduce the bulk in the seams.



Before returning the hoop to the machine place 1 piece of your base fabric right side up over the insul-bright and tape into place. Return the hoop to the machine and stitch color 3 which will tack down the fabric and stitch the quilting lines and placement lines for the pockets.



Positioning and taping down the pockets is done easier with the hoop off the machine so remove the hoop one more time.

Start by placing the top pocket, design side down, and folded edge on the top placement line. Tape into place. Do the same with the bottom pocket.



Pocket Placement guide lines.

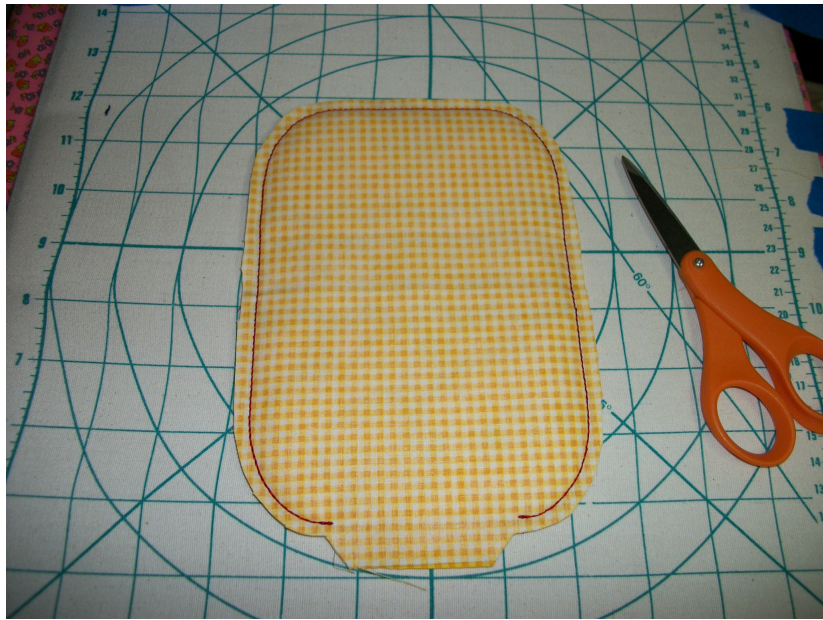


Use plenty of tape to hold the pockets in place. Watch the circled areas to make sure the machine foot does not catch and move the fabric.

Color 4 will tack down the pockets. When this is finished you can remove all of the tape and place the 2nd piece of 8x8 base fabric Right Side DOWN over the pockets. Tape into place.



Stitch color 5 which will sew everything together leaving a turn opening at the bottom. When this is finished remove the pot holder from the hoop and tear away the stabilizer. Trim the seam allowance approximately 1/4 " away from the seam line all the way around . I like to make the seam allowance a little bigger at the turn opening.



Now ... turn the pot holder thru the opening. The pockets will still be inside out. Push out all of the corners and give it a quick press.



Now the opening at the bottom needs to be closed. Turn in the seam allowance and hand stitch the opening closed or my favorite way to close a seam like this is to use a small piece of Steam-a-Seam and iron the opening shut. Quick and easy.



Now turn the pockets right side out and push out the corners.



Press one more time and you are finished !



Color Charts for all designs are listed below.

ATWMAS0324-5x7



- 1- match fabric - placement line
place top pocket fabric
- 2 - match fabric - tack down
- 3 - red - wave
- 4 - green - swirls
- 5 - yellow - flower

****Fold and tape fabric back****

- 6 - match fabric - placement line
place bottom pocket fabric
- 7 - match fabric - tack down
- 8 - red - wave
- 9 - dk green - stem
- 10 - med green - swirls
- 11 - red - cherry
- 12 - yellow - flowers

ATWMAS0325-5x7



- 1- match fabric - placement line
place top pocket fabric
- 2 - match fabric - tack down
- 3 - purple - wave
- 4 - green - swirls
- 5 - yellow - flower

****Fold and tape fabric back****

- 6 - match fabric - placement line
place bottom pocket fabric
- 7 - match fabric - tack down
- 8 - purple - wave
- 9 - med green - leaf center
- 10 - green - leaf outline
- 11 - brown - stem
- 12 - lt purple - grape center
- 13 - purple - grape outline

ATWMAS0326-5x7



1- match fabric - placement line
place top pocket fabric

2 - match fabric - tack down

3 - lt orange - wave

4 - green - swirls

5 - yellow - flower

****Fold and tape fabric back****

6 - match fabric - placement line
place bottom pocket fabric

7 - match fabric - tack down

8 - lt orange - wave

9 - green - swirl

10 - yellow - flowers

11 - golden yellow - peach center

12 - lt orange - peach outline

13 - lt brown - pit center

14 - reddish brown - pit outline

ATWMAS0327-5x7



1- match fabric - placement line
place top pocket fabric

2 - match fabric - tack down

3 - green - wave

4 - green - swirls

5 - yellow - flower

****Fold and tape fabric back****

6 - match fabric - placement line
place bottom pocket fabric

7 - match fabric - tack down

8 - green - wave

9 - med green - swirl, leaf center

10 - dk green - leaf outline

11 - yellow - pineapple center

12 - brownish green - pineapple top center

13 - yellow green - pineapple outline

14 - yellow - flower

ATWMAS0328-5x7



- 1- match fabric - placement line
place top pocket fabric
- 2 - match fabric - tack down
- 3 - yellow - wave
- 4 - green - swirls
- 5 - yellow - flower

****Fold and tape fabric back****

- 6 - match fabric - placement line
place bottom pocket fabric
- 7 - match fabric - tack down
- 8 - yellow - wave
- 9 - green - swirl
- 10 - yellow - top center
- 11 - gold yellow - bottom center
- 12 - brown - stem
- 13 - yellow green - outline
- 14 - yellow - flower

ATWMAS0329-5x7



- 1- match fabric - placement line
place top pocket fabric
- 2 - match fabric - tack down
- 3 - red - wave
- 4 - green - swirls
- 5 - yellow - flower

****Fold and tape fabric back****

- 6 - match fabric - placement line
place bottom pocket fabric
- 7 - match fabric - tack down
- 8 - red - wave
- 9 - green - swirl
- 10 - red - apple outline
- 11 - brown - stem, seeds
- 12 - It tan - apple center
- 13 - off white - center curls
- 14 - red - apple outline
- 15 - yellow - flowers

ATWMAS0330-5x7



- 1- match fabric - placement line
place top pocket fabric
- 2 - match fabric - tack down
- 3 - green - wave
- 4 - green - swirls
- 5 - yellow - flower

****Fold and tape fabric back****

- 6 - match fabric - placement line
place bottom pocket fabric
- 7 - match fabric - tack down
- 8 - green - wave
- 9 - med pink - center scallops
- 10 - red pink - center outline
- 11 - lt green - inside rind
- 12 - med green - swirl
- 13 - green - outside rind
- 14 - yellow - flowers

ATWMAS0331-5x7



- 1- match fabric - placement line
place top pocket fabric
- 2 - match fabric - tack down
- 3 - red - wave
- 4 - green - swirls
- 5 - yellow - flower

****Fold and tape fabric back****

- 6 - match fabric - placement line
place bottom pocket fabric
- 7 - match fabric - tack down
- 8 - red - wave
- 9 - med red - strawberry center
- 10 - red- center curls, outline
- 11 - med green - leaf center, swirl
- 12 - dk green - leaf outline
- 14 - yellow - flowers

ATWMAS0332-5x7



- 1- match fabric - placement line
place top pocket fabric
- 2 - match fabric - tack down
- 3 - yellow - wave
- 4 - green - swirls
- 5 - yellow - flower

****Fold and tape fabric back****

- 6 - match fabric - placement line
place bottom pocket fabric
- 7 - match fabric - tack down
- 8 - yellow - wave
- 9 - green - swirl
- 10 - pale yellow - center
- 11 - med yellow - center
- 12 - bright yellow - lemon outline

ATWMAS0333-5x7



- 1- match fabric - placement line
place top pocket fabric
- 2 - match fabric - tack down
- 3 - orange - wave
- 4 - green - swirls
- 5 - yellow - flower

****Fold and tape fabric back****

- 6 - match fabric - placement line
place bottom pocket fabric
- 7 - match fabric - tack down
- 8 - orange - wave
- 9 - green - swirl
- 10 - pale orange - center
- 11 - orange - outline
- 12 - pale orange - slice center
- 13 - yellow flower

ATWMAS0334-5x7



Pot Holder Base

Use with all pocket designs.

- 1- match fabric - placement line
place insulbright & batting**
- 2 - match fabric - tack down
trim insulbright & batting
place fabric right side up**
- 3 - match fabric - tack down,
quilting & pocket placement lines
place pockets**
- 4 - match fabric - tack down pockets
place fabric right side down**
- 5 - match fabric - final stitch down**