



Materials:

Winter Door Hanger Appliqué Design(s)

2 to 3 Pieces of Tear Away Backing

Embroidery threads

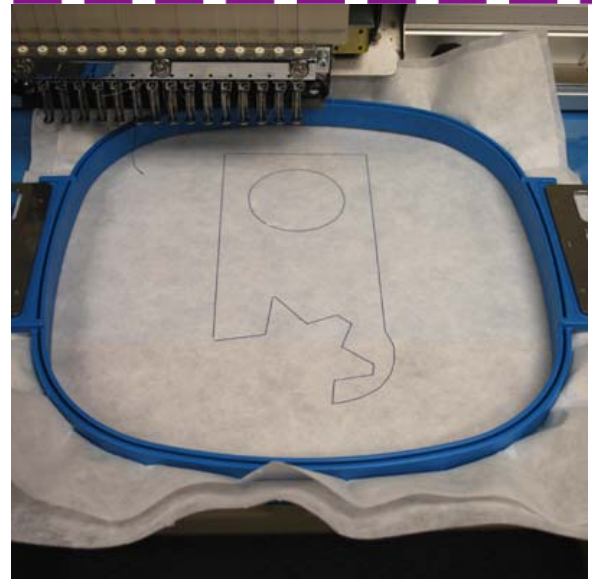
Cut Appliqué Fabric(s)

Spray Adhesive (optional)

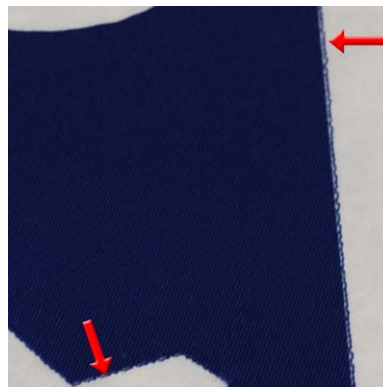
Step 1:
Hoop 2 to 3 pieces of backing.



Step 2:
Embroider the first color stop. This is the
dieline for the first applique piece.



Step 3:
Place the applique piece inside the
dielines. Use a spray adhesive if the
fabric does not have a sticky backing.
The red arrows in the first image are
pointing to the dieline.



Step 4:

After the dieline is embroidered stop the machine and place the next applique piece inside the dieline.

(Depending on the number of applique pieces that are in each design, you may need to do this several times.)

Dieline



Appliqué Placement



Step 5:

Once the entire design has been embroidered, remove it from the hoop and gently pull the tear away backing away from the design.



Step 6:

Now your wonderful new door hanger is
ready to hang from any door in your
home.



Thank you for your purchase.