

# Dona Embroidery Shop



## Pixie Bunny Mug Rug instructions

### Materials:

Tearaway Stabilizer

Fabrics

Batting

Glue

LET'S START!

**STEP 1: Stitch the placement line for the batting**



**STEP 2: Place the batting on the top of the hoop**





**STEP 3: Stitch the batting down and remove the hoop from your machine and trim the batting close to the stitch**

**1 Before trim**



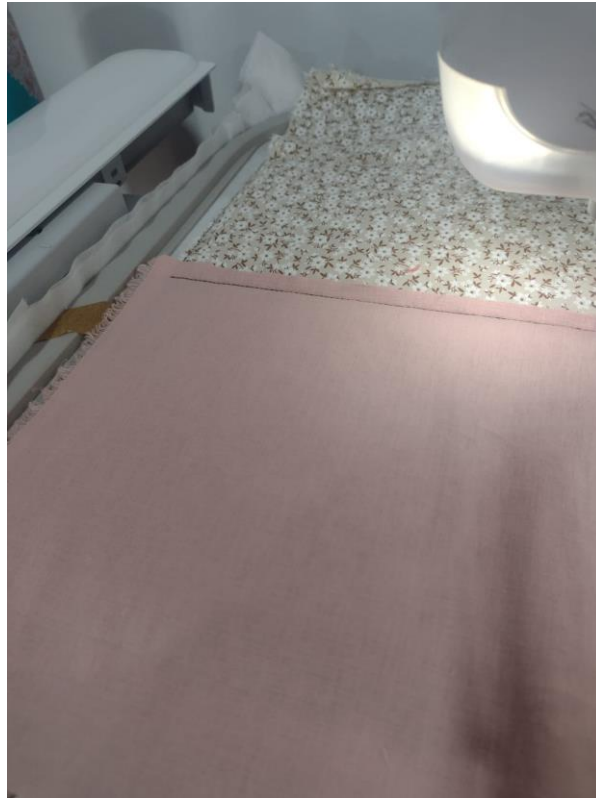
**2 After trim**



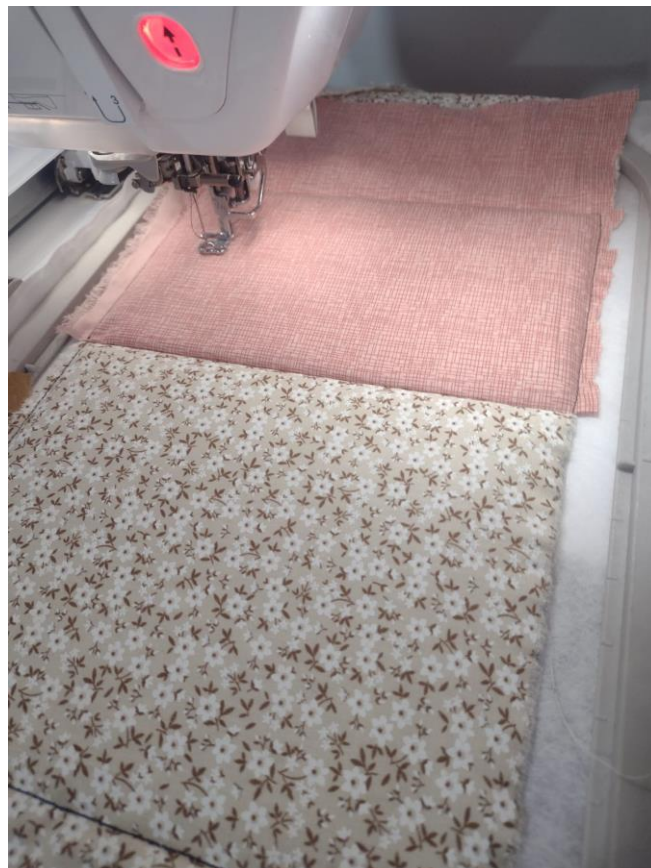
**STEP 4: Place the fabric on top of the hoop covering the placement line, and stitch it.**



**STEP 5: Stitch the placement line for the up side fabric, put the fabric with the print down and stitch it.**

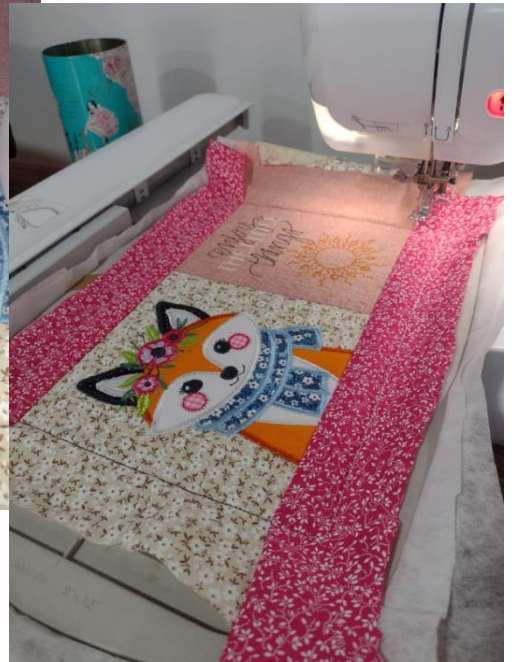
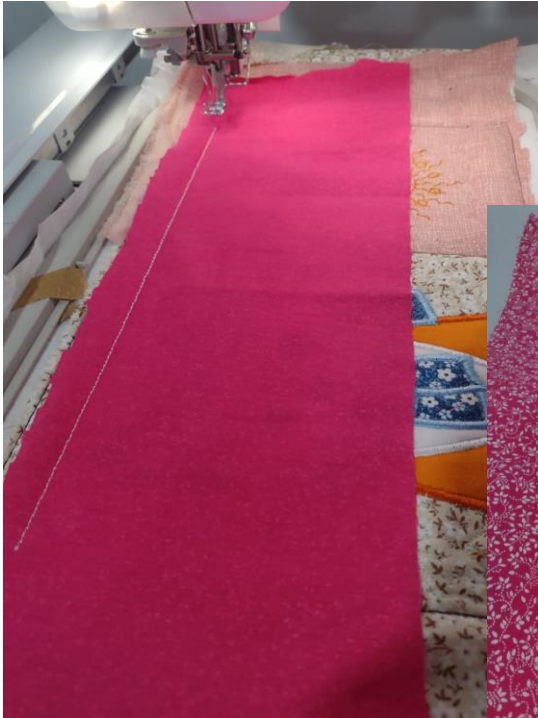


**STEP 6: Pull the fabric to the other side and stitch it.**





**STEP 7: Stitch the placement line for the left side fabric, put the fabric with the print down and stitch it. Pull the fabric to the other side and stitch it! The same process to the others sides**



**STEP 8: Stitch the Appliqué, satin stitch and Letters**





**STEP 9: Cover it with two pieces of fabric and stitch it out**



**STEP 10: Remove the hoop from the machine and trim the borders. Turn to the right side! Iron it and finish it with glue!**









