

Dona Embroidery Shop



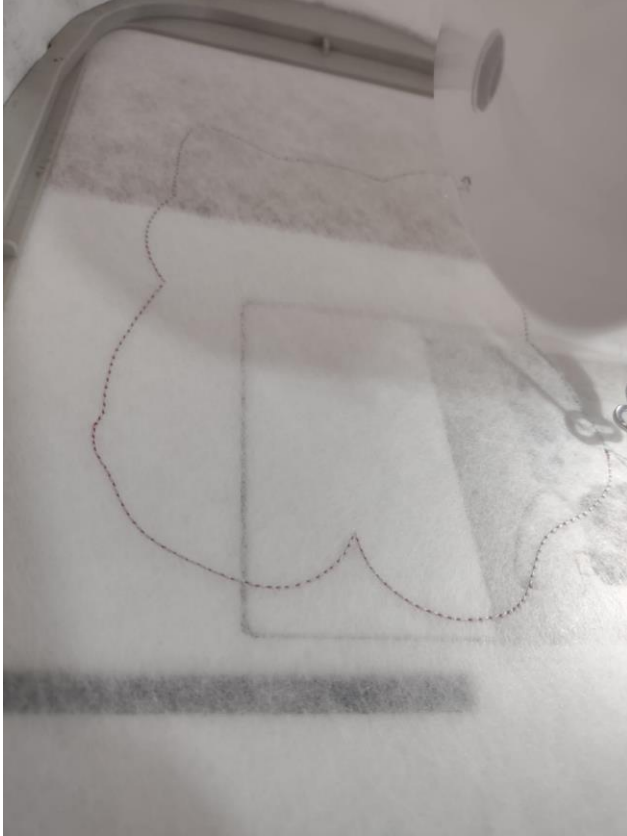
ITH Floral Cat Wreath instructions

Materials:

Batting
Fabric
Felt
Hot Glue

LET'S START!

STEP 1: HOOP STABILIZER AND RUN PLACEMENT STITCH



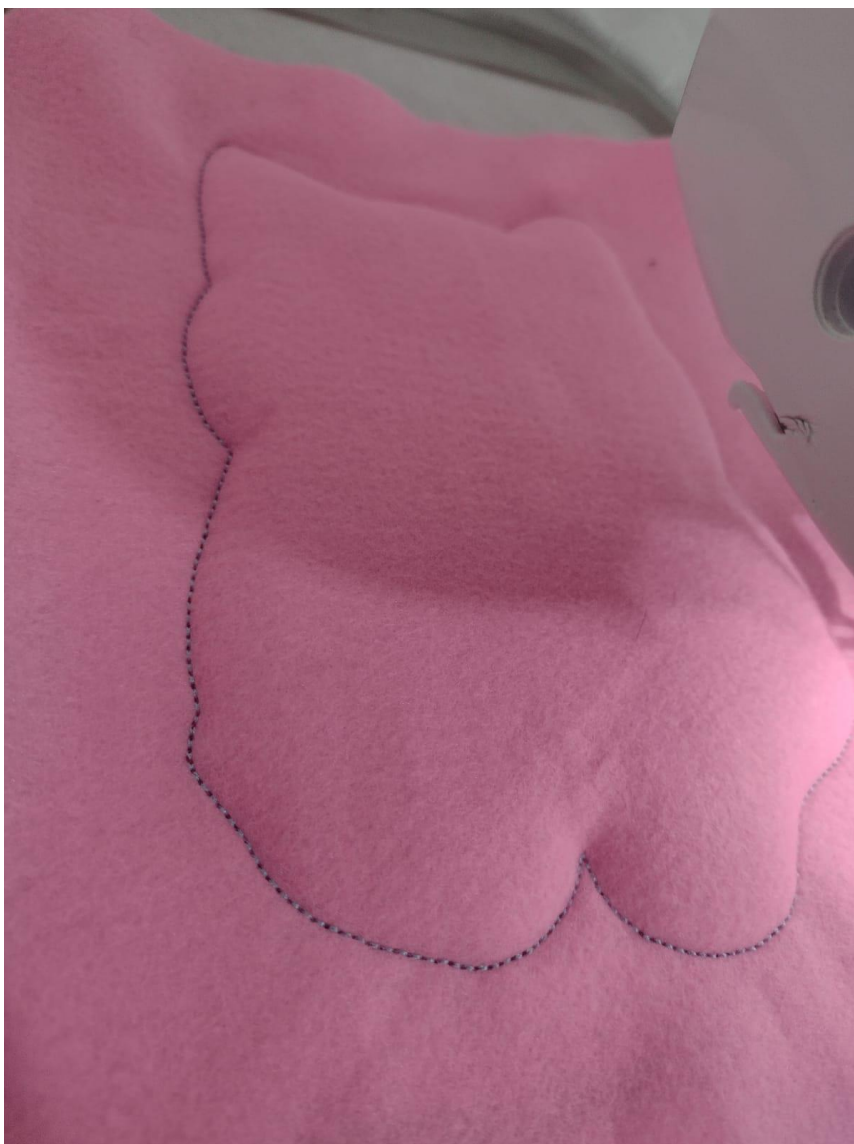
STEP 2: Place the batting on the top of the hoop



STEP 3: Stitch the batting down. Trim the excess



STEP4: Place the felt on the top of the hoop. Stitch the felt down



STEP 5: Follow the machine steps, stitch the applique, fill stitch and satin stitch parts until the white spots!



STEP 6: Remove the hoop from the machine and attach with tape a felt piece to the back



STEP 7: Stitch the felt down, remove it and cut the excess. Stitch the other parts, the instructions and steps are the same.



STEP9: Attach the pieces with hot glue and use your creativity to decorate it!



