

Dona Embroidery Shop



Stained Glass Rose Mug Rug

Materials:

Stabilizer.

Cotton fabric in light blue, dark blue, purple, lilac, red, light green, dark green, yellow, brown and black.

Batting.

Pearly cellophane

LET'S START!

STEP 1: Stitch the placement line for the batting



STEP 2: Place the batting on the top of the hoop



STEP 3: Stitch the batting down and remove the hoop from your machine and trim the batting close to the stitch

1 Before trim



2 After trim



STEP 4: Stitch all the appliqué parts



STEP 5: Cover it with Pearly cellophane, and stitch it out



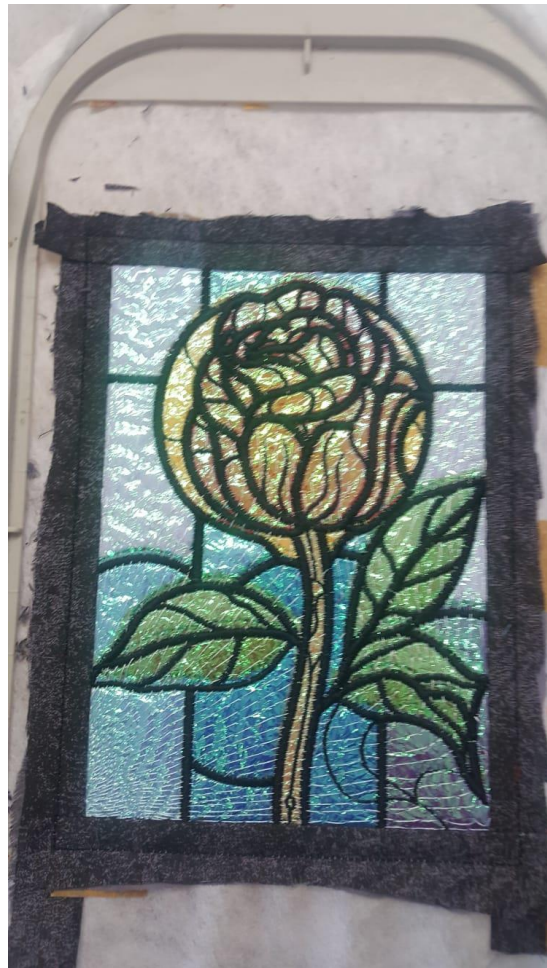
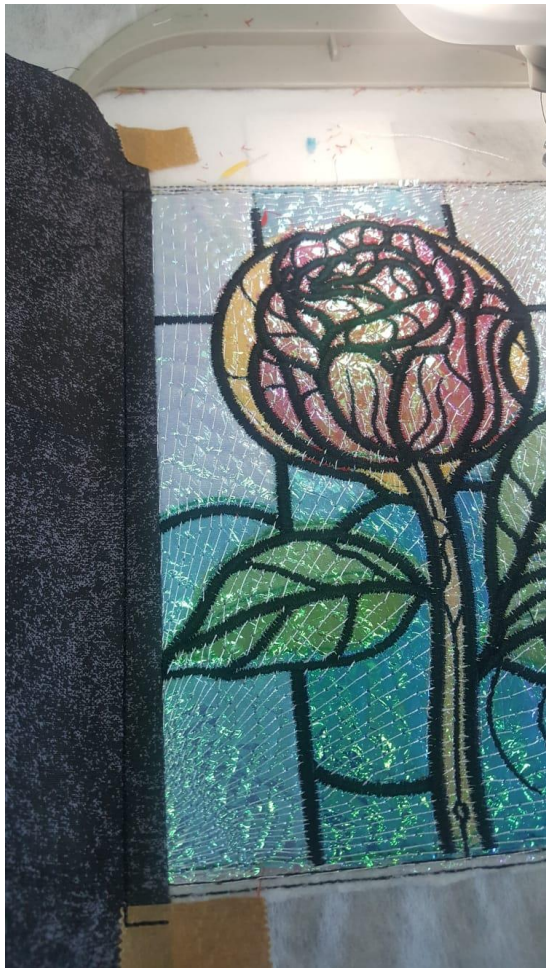
STEP 6: Follow the machine steps and stitch satin stitch contours in black



STEP 7: Stitch the placement line for the right side border, put the black fabric with the print down and stitch it.



STEP 8: Pull the fabric to the other side and stitch it. Do the same to the others borders



STEP 9: Put two pieces of fabric over it and stitch the fabrics down!



STEP 12: Remove the hoop from the machine and trim the borders. Turn to the right side!



