



DOUDOU DEER

This fact in a 10x10cm frame

Materials

Arms:

- 2 pieces of 11x11cm brown
- 1 piece of 4x11cm high beige

Wood and ears

- 1 piece of 11x11cm brown
- 1 piece of 11x6cm high brown
- 1 piece of 11x6cm high beige

Head:

- 2 pieces of 11x11cm brown
- 1 piece of 11x8cm high beige

BANDANA :

- 2 pieces of 11x11cm

Tear Away support, hydro soluble support, stuff,

Blanket:

This cover is made with the sewing machine.

Pattern provided: 2 pieces of 24x24cm

ARM



Seam 1: this seam is done on your support to tell you the location for your fabric



Put your fabric taking care to hide the entire seam



Seam 2: this seam will hold your fabric on your support



Seam 3: this seam tells you the location of your beige fabric



Put your beige fabric taking care to hide all the seam



Seam 4: sewing your beige fabric on your paws

Cut the excess fabric in the top of the fabric



Seam 5: embroidery stitch



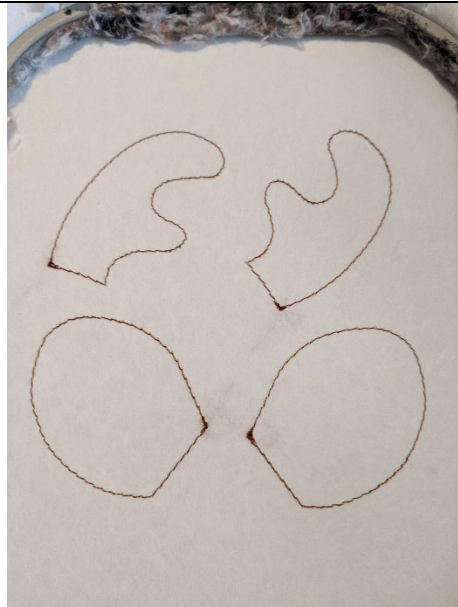
Put your ^{2nd} piece of brown fabric, place against place on your work



Sewing 6: this seam will join your 2 pieces of fabric together.

Get out of the frame, remove the excess fabric leaving a little more on the unsewn parts on either side of the arms

WOOD AND EARS



Seam 1: this seam is done on your support to tell you the location for your fabric



Put your fabric taking care to hide the entire seam



Seam 2: this seam will hold your fabric on your support



Put your piece of brown fabric on the woods, taking care to hide all the seam without going on the ears



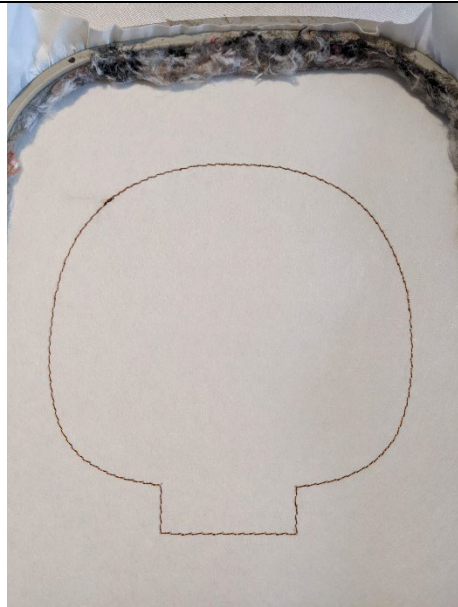
Sewing 3: sewing your 2 pieces of fabric for woods together



Take your beige fabric and put place against place on the ears

Seam 4: This seam will join your 2 pieces of fabric for the ears

HEAD



Seam 1: this seam is done on your support to tell you the location for your fabric



Put your fabric and your water-soluble support , taking care to hide the entire seam



Seam 2: This seam tells you the location for your beige fabric



Put your beige fabric (place towards you) and water-soluble support on the lower part of the face



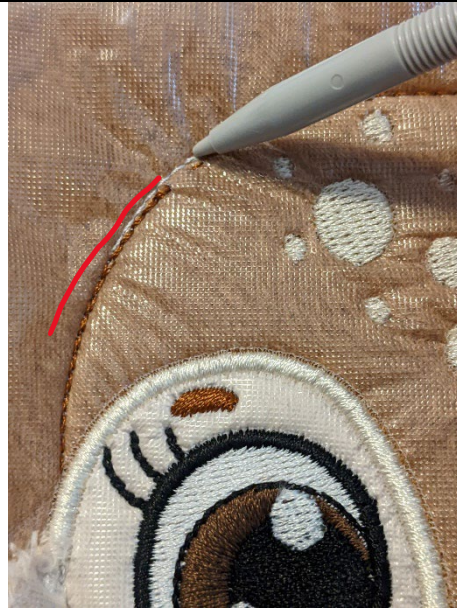
Seam 3: this seam will keep your fabric and water-soluble support on your brown fabric



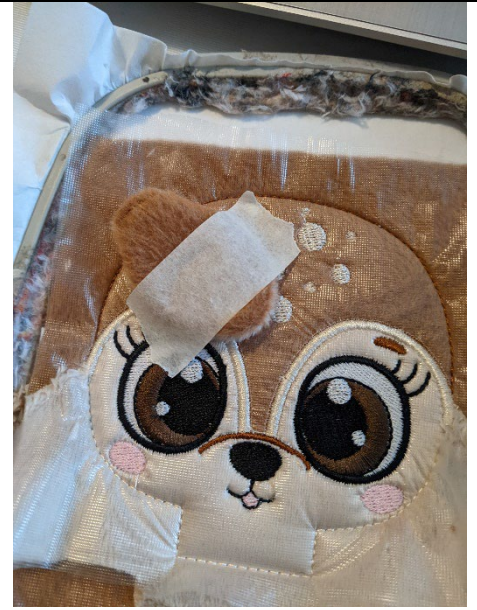
Cut the excess fabric in the top of your beige fabric



Seam 4 to 10: embroidery stitches



Seam 11 and 17: this seam tells you the location of your ears



Put your ear place against place over the seam, hold well in place



Seam 12 and 18: sewing your ear on your head



Seam 13 and 15: sewing to tell you the location of your woods



Put your wood, place against place on the seam, hold well in place



After sewing 18 you should have this



Seam 19 and 21: this seam tells you the location of your arms



Put your arm place against place on the seam and hold well in place



Seam 20 and 22: sewing your arms on your head



Put your 2nd piece of fabric place against place



Sewing 23: This seam will join your 2 pieces of fabric together

THE BANDANA



Seam 1: this seam is done on your support to tell you the location of your fabric



Put your 2 pieces of fabric, place against place on your support taking care to hide all the seam



Sewing 2: this seam will join your 2 pieces together

THE ASSEMBLY



Print your pattern, cut your 2 pieces of fabric for the cover. Put place against place and make a triple seam to the sewing machine. Make a seam only in the places indicated in yellow



Insert your head into the blanket, taking care to put the front of the head on the front of the blanket



Make the seam of your head on your blanket.

Put in the place.

©Copyright 2022 by Broderie D'Zhiboux.

You can sell the items made with these embroideries but you can NOT share, copy, exchange or resell this file in part or in whole in any format.

The resale of this digital design is against the law.

For more information: broderiedzhiboux@outlook.com