

In The Hoop Nativity Mylar Tealights

Supplies needed:

- Water-soluble stabilizer (fabric type)
- Embroidery thread with the same thread wound on your bobbin
- Felt
- Battery operated tealight



These designs will stitch in the 4x4 hoop, and is a complete in-the-hoop project using mylar..

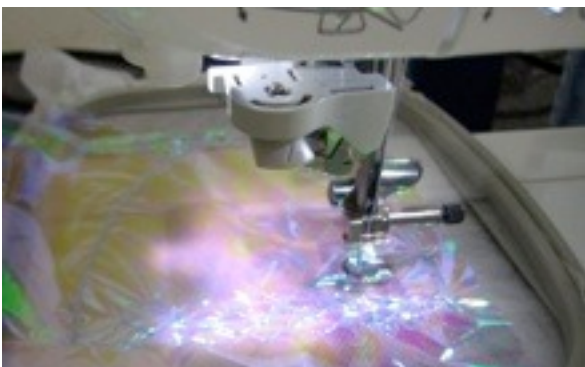


To begin, hoop your water soluble stabilizer



Wind the same thread on your bobbin as you are using as the top thread

The first thread color showing is red, but use the thread color you chose to do the background and outer border. The red thread color is simply a thread color stop (similar to an applique) to give you placement for the mylar.



After the first outline stitches, lay your mylar over the area and let the stitching begin!



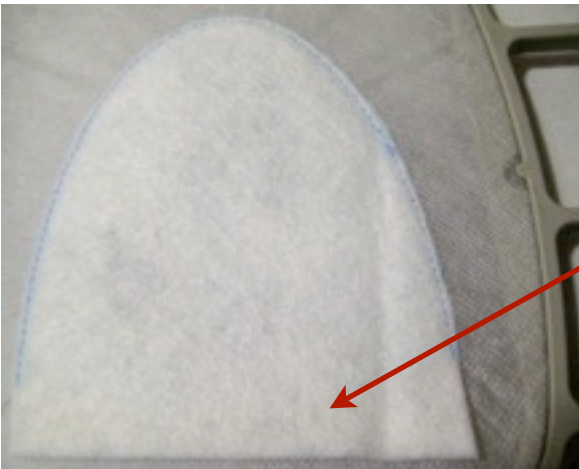
When the stitching stops, remove the hoop and gently tear away the excess mylar. **DO NOT REMOVE** from the hoop at this point!

While the hoop is off the machine, change the thread to the color you are using for the main design. Be sure to also change the bobbin thread to match.

Stitch the design.

When the machine stops again, change the top thread and bobbin back to the same color you used for the background and the outside border.

With the hoop back on the machine, slip the felt under the design. It will be laying on your sewing machine bed just under the design (make sure the felt is under the **WHOLE** design). When you stitch the next thread color (red) it will outline the outside border.



After this has stitched, it will attach the felt to the back of your design.

Remove the hoop and closely trim the felt around the design (similar to an applique design).

Keep some excess felt on the bottom of the design, but closely trim around the "U" shape of the design.

After reattaching the hoop, finish the stitching.



Once the stitching is finished, trim the stabilizer away.

You will wait to trim the felt on the bottom after rinsing. It will be easier to trim after the stabilizer is removed.

Soak the design in water to remove the water soluble stabilizer. After soaking, gently blot the excess moisture and lay flat to dry.

Trim the felt on the bottom to match with the stitched front. These will now fit right over the tealight.



Before trimming

After trimming



Enjoy!

