

INSTRUCTION

1. Download the design from the website to your computer.
2. Unzip the file. Upload the embroidery file to your machine.
3. Hoop 2 layers of water-soluble mesh.
4. Start embroidering. The machine will embroider the lace edging and stop.



5. Place a piece fabric over the outline.
Start the machine. It will embroider the outline zigzag of the same and stop.



6. A sharp scissors cut away the excess fabric as close to the outline as possible.

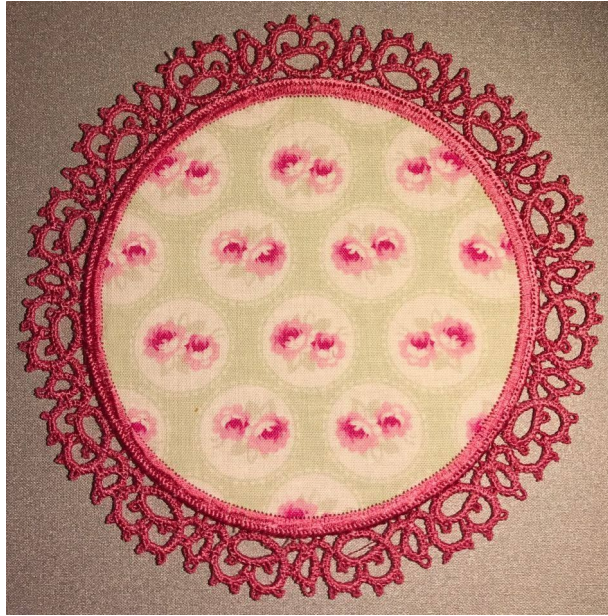


7. Return the hoop to the machine. Finish the embroidery.



8. Rinse the stabilizer in lukewarm water and leave to air dry. Press with steam.





It is important

Always make a test stitch-out of the design and wash away the stabilizer. This helps you to select the threads, needles, stabilizers and settings of your machine correctly.

To get 2-sided embroidery you should use the same thread for the needle thread and bobbin thread.

Thank you for your purchase.

