

# ITH-FSA-Organza/Tulle Rose-Bookmarks-CF-NLS

Instructions



## ITH-FSA-Organza/Tulle-Rose-Bookmarks-5x7-CF-NLS



Filename: NLSEE2354-5x7

Stitch Count: 13,253

Size: 6.98 x 3.04 inches (177.28 x 77.15 mm)



Filename: NLSEE2355-5x7

Stitch Count: 12,551

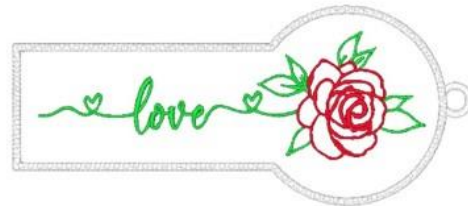
Size: 6.98 x 3.04 inches (177.28 x 77.15 mm)



Filename: NLSEE2356-5x7

Stitch Count: 12,756

Size: 6.98 x 3.04 inches (177.28 x 77.15 mm)



Filename: NLSEE2357-5x7

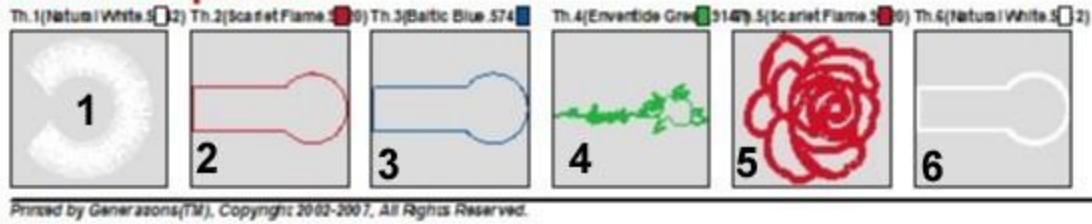
Stitch Count: 13,199

Size: 6.98 x 3.04 inches (177.28 x 77.15 mm)

The Color Sequence Chart below will be referenced throughout these instructions.

NLSEE2356-5x7

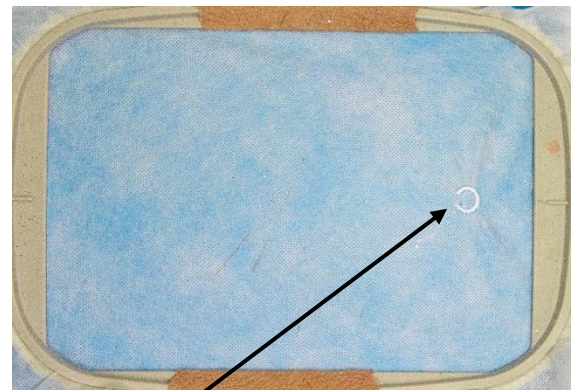
## Color Sequence:



## Materials/Cutting Chart

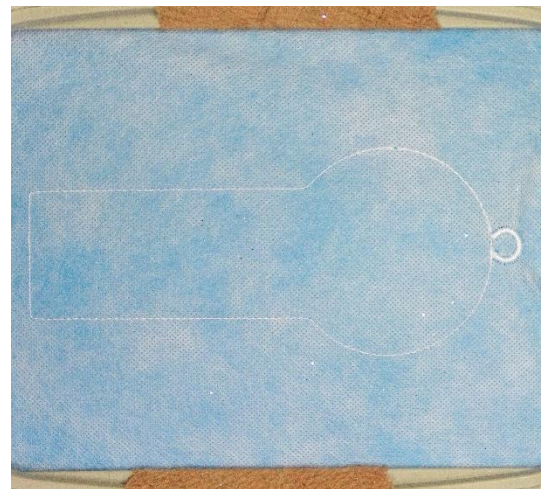
Materials	Size and Number of Cuts
Tulle or Organza (I used a double layer of sparkle Tulle)	2 Cuts at 6 x 7 inches
Water Soluble Stabilizer-fabric type-not plastic-type	Enough for a 5x7 inch embroidery hoop
Selected threads	A bobbin for each selected color

1. Prepare materials for project as indicated in the Materials/Cutting Chart above.
2. Hoop water soluble stabilizer in a 5x7 inch embroidery hoop and attach to embroidery machine.
3. Transfer design file to embroidery machine.
4. Thread needle and bobbin thread with desired thread (I used white thread).
5. Sew #1 in the Color Sequence Chart. These stitches will create the hanger for the project.



Hanger

6. Sew #2 in the Color Sequence Chart. These stitches will create the placement stitches for the project. I used white here too.



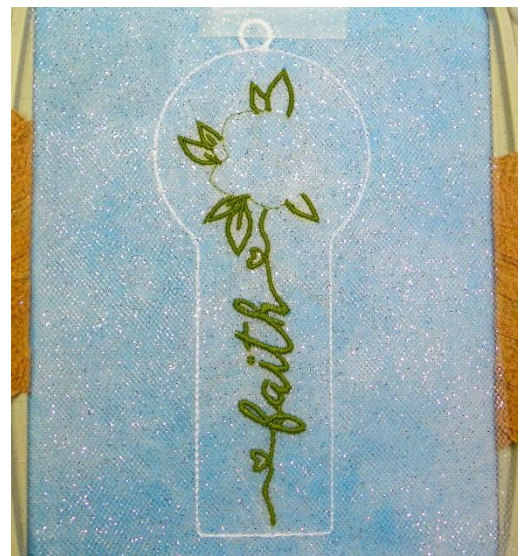
7. Remove hoop from machine, place on a flat surface and place the material (I used two layers of sparkle tulle) over the placement stitches.
8. Secure material with tape to keep it in place while being sewn.



9. Return hoop to machine and sew #3 in the Color Sequence Chart. These stitches will tack the material to the stabilizer. I used white thread for these stitches.



10. Change needle and bobbin thread to green and sew #4 in the Color Sequence Chart. These stitches will create the greenery for the project.



11. Change needle and bobbin thread to what ever color you wish the rose to be and sew #5 in the Color Sequence Chart. These stitches will create the satin stitches for the rose.





12. Remove hoop from machine, place on a flat surface and carefully cut away the excess material from around the outside of the bookmark.



13. Change needle and bobbin thread to what ever color you wish the satin border of the bookmark to be sew in. I used white because I used the white, sparkle, tulle.

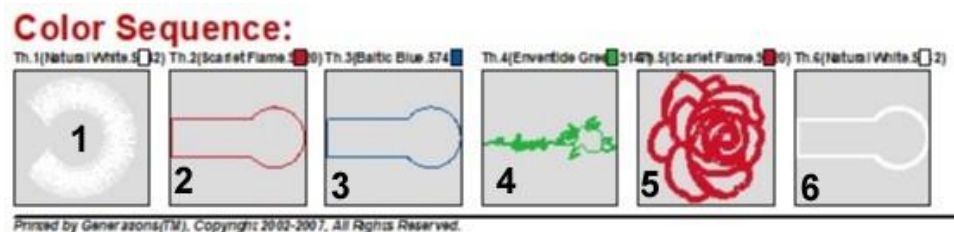
14. Return hoop to machine and sew #6 in the Color Sequence Chart. These stitches will create the border of the bookmark.



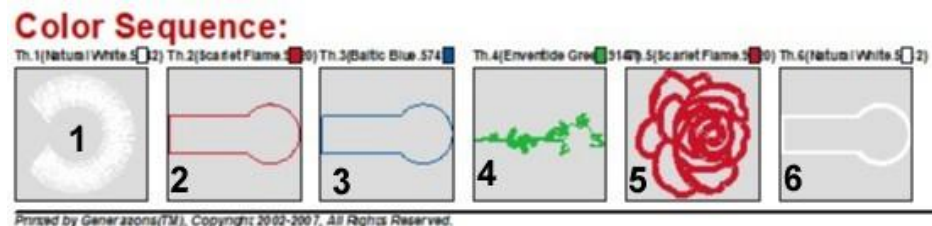
<p>15. Remove hoop from machine and project from hoop.</p> <p>16. Cut away excess stabilizer from around the bookmark...leave at least ¼ inch to ensure no border stitches are cut accidentally.</p>	
<p>17. Place bookmark in warm water and swish until the stabilizer begins to fall away (dissolve).</p> <p>18. Remove bookmark from water, place on a paper towel and blot most of the water from the project.</p> <p>19. Lie flat to dry.</p> <p>20. Add a tassel or ribbon and the bookmark is ready to use or give as a gift.</p>	

The Color Sequence Charts for the other three designs are included below. All designs are sewn in the same manner, as outlined in the above instructions.

NLSEE2354-5x7



NLSEE2355-5x7



NLSEE2357-5x7

