

# Flower Power Key Fob Instructions



Key fobs made 2 different ways. The snap tab fobs are for the 5"x7" hoop. The eyelet fobs are for the 4"x4" hoop.

When looking for vinyl for these fobs it is important that it has a knit backing on it. Fuzzy backed vinyl (think table cloth) will not work.

See the photo below that shows what the back should look like.



Supplies:

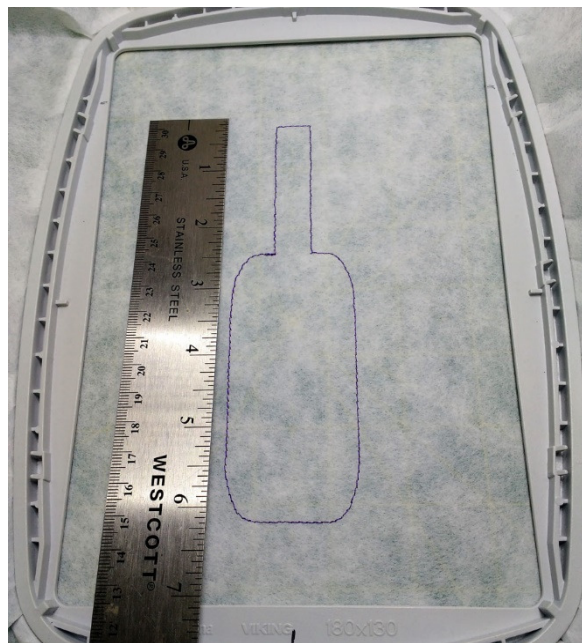
Medium weight cut-away stabilizer

Spray adhesive or painters tape

Pieces of vinyl at least 7" x 3 1/2" .... You will measure as you go

Your favorite tools to apply snaps ( I use Kam Snaps )

Your favorite tools to apply eyelets ( I use the Crop-a-Dile )



Hoop the cut-away stabilizer and stitch the first color. This is the placement line for the vinyl.

Remove the hoop from the machine ( **DO NOT remove the project from the hoop** )

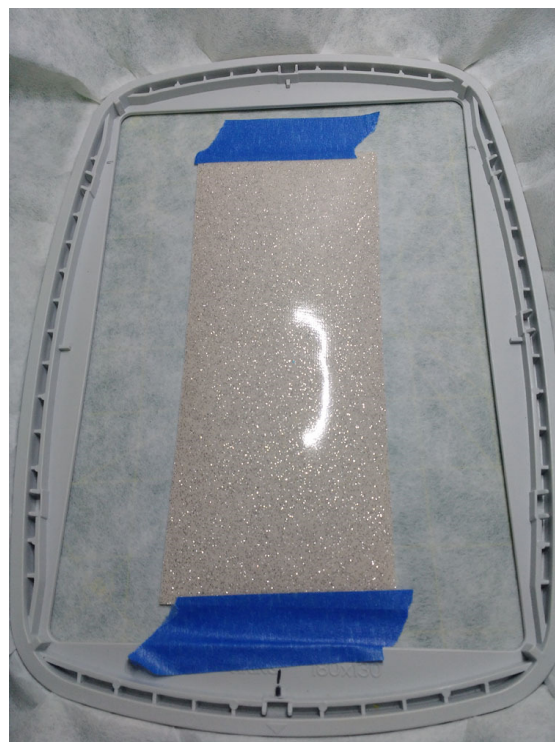
Measure the length and width of the placement line. Cut your vinyl about 1" larger than your measurements. Cut 2 pieces ... 1 for the front and 1 for the back.



Place the top vinyl so it completely covers the placement line and tape or spray baste to hold it in place.

Return the hoop to the machine and stitch the rest of the design to the **2nd to last color**.

**IMPORTANT !! DO NOT STITCH THE LAST COLOR !!!**







The design should now look something like this.

Remove the hoop from the machine.

**DO NOT Remove the project from the hoop !**

Turn the hoop over and trim any stray threads that are out of the stitched area.



Place the piece of backing vinyl centered over the stitching and tape into place.

Return the hoop to the machine and stitch the last color.

Your design should now look like this.







Remove it from the hoop and trim away the excess stabilizer.

With a small pair of sharp scissors trim around the outside edge of the design about 1/16" to 1/8".



Now use your preferred method of installing snaps or eyelets to the fobs.

