



Materials:

**Baking Saying Towel Topper Designs
(Examples used CD031918FG & CD031918FH)**

4 Pieces of applique fabric

3 Pieces of tear away stabilizer

1 Pieces of paper for the dieline template printouts per design

Spray adhesive

Scissors

Tape

1/4" wide or larger Elastic Ribbon

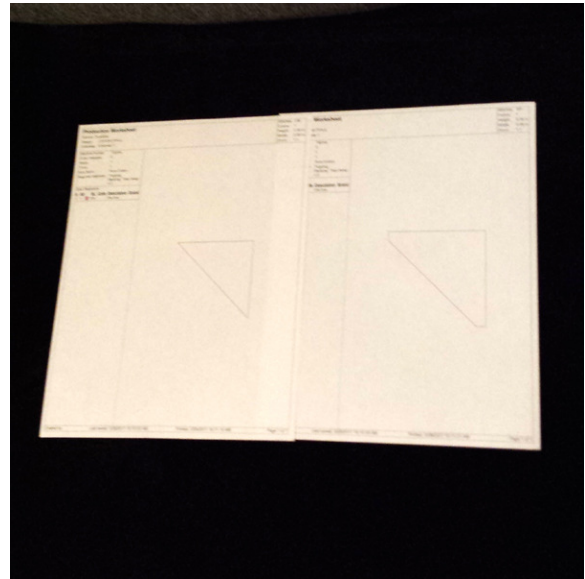
Step 1:

Print the dieline files. Locate the files with the -a at the end of them.

For example: **CD031918FG-a.PES**

Print 1 each of the -a files, with your embroidery software and a printer, for the files CD031918FA-T and use it to cut a front and back applique fabric piece.

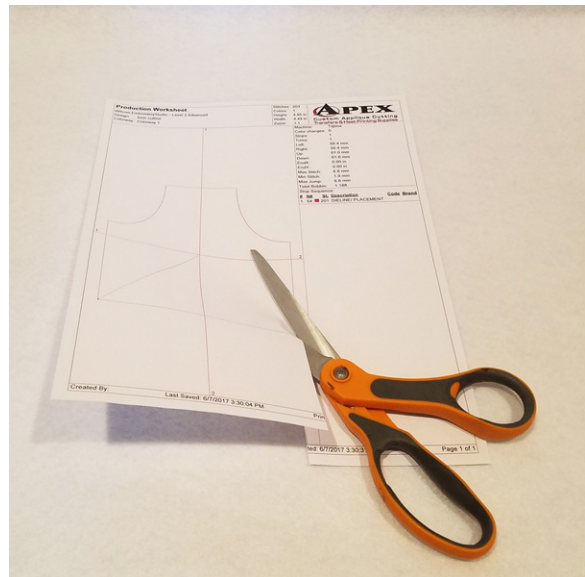
If you do not have embroidery software, a great program to use is Wilcom TrueSizer which is a free download online.



Example from another design.

Step 2:

Cut the paper down close to the template of each on the designs.



Example from another design.

Step 3:

Use a light temporary spray adhesive and spray on the back of your paper templates.

Cut applique fabric and paper along the template dieline for each of the applique pieces. Remove the paper template.



Example from another design.

Step 4:

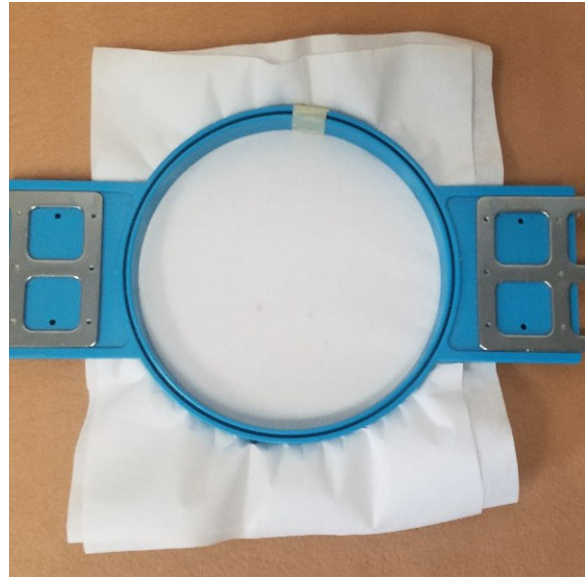
Set the applique pieces aside.



Example from another design.

Step 5:

Hoop 2 pieces of tearaway stabilizer.



Step 6:

Place the hoop on the machine and
embroider the first color stop which is the
first dieline.



Step 7:

Lightly spray the back of the front applique with the adhesive.



Step 8:

Place the front appliqué piece within the dielines.



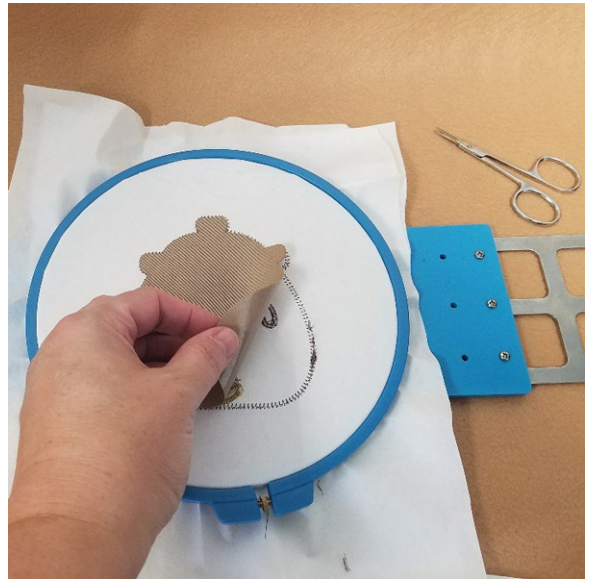
Step 9:

Embroider until the Stop place back applique.



Step 10:

Remove the hoop and flip the hoop over to the back side. **(DO NOT REMOVE THE DESIGN FROM THE HOOP.)** Lightly spray the back piece with adhesive and place inside the dielines.



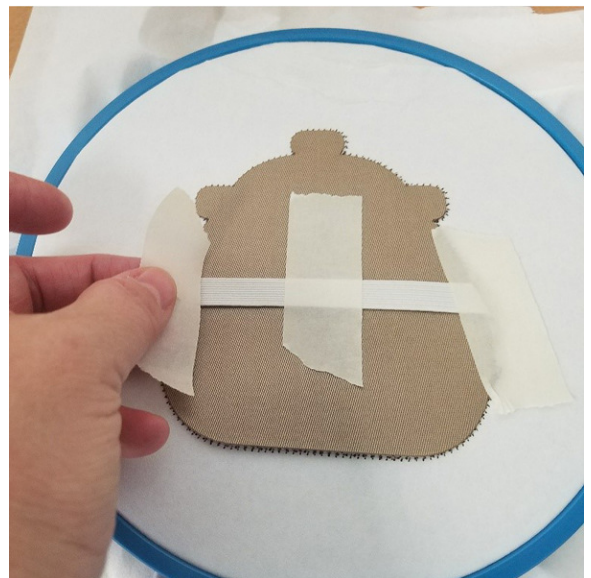
Step 11:

Cut a piece of elastic the width of the center of your design as shown.



Step 12:

Tape the elastic piece down on each side and in the center.



Step 13:

Gently re-hoop and it will tackdown the applique to the front piece. Continue sewing until the final color stop.



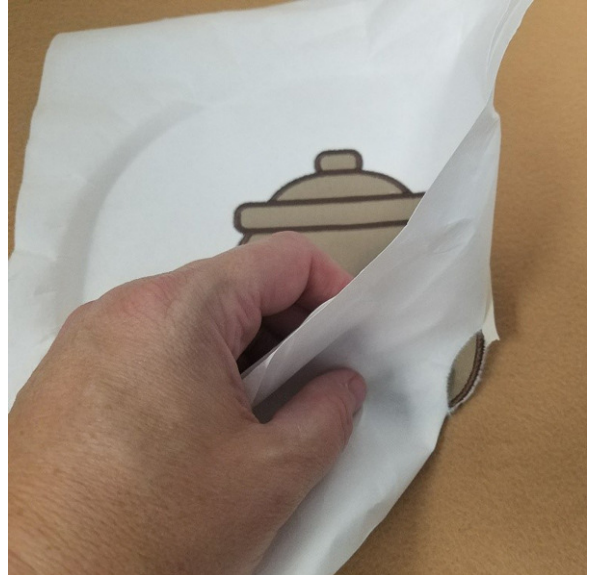
Step 14:

Remove the design from the hoop!



Step 15:

Gently tear away the stabilizer from your new Towel Topper!



Step 16:

Place the towel through the elastic loop on the back of the towel topper. Then place a printed template on the towel where you would like the towel applique design to be embroidered. You can pin it in place until you are ready to embroider it.



Step 17:

Hoop your towel with 1 piece of backing!



Step 18:

Place the hoop on the machine, remove the template and embroider the first color stop which is the first dieline.



Step 19:

Lightly spray the back of the front applique with the adhesive.



Step 18:

Place the appliqué piece within the dielines. Continue embroidering until the Stop place back applique.

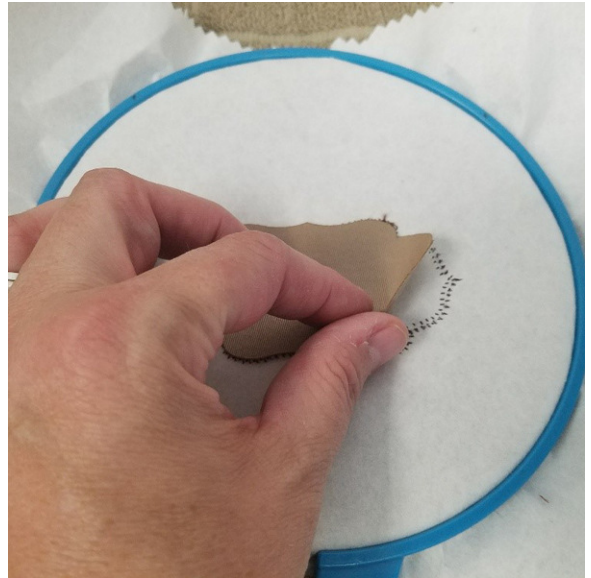


Step 19:

This is optional:

Remove the hoop and flip the hoop over to the back side. **(DO NOT REMOVE THE DESIGN FROM THE HOOP.)** Lightly spray the back piece with adhesive and place inside the dielines.

Gently rehoop and it will tackdown the applique to the front piece. Continue embroidering until the final color stop.



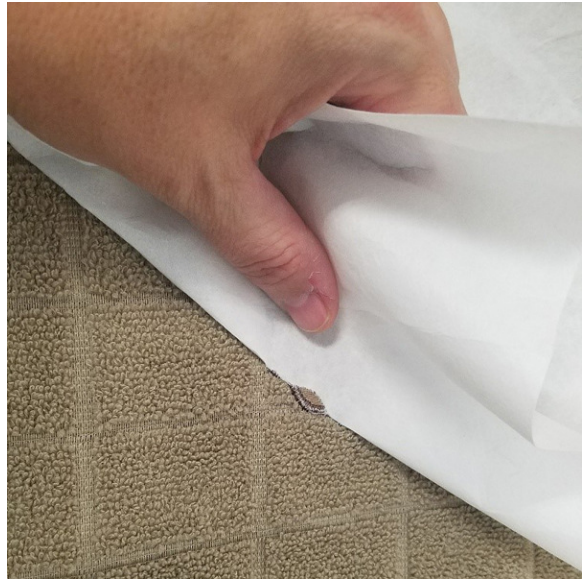
Step 17:

If you skipped the last step continue embroidering until the final color stop.
Remove the design from the hoop!



Step 18:

**Gently tear away the stabilizer from the back
of your new Towel Applique design!**



Finished Baking Saying Towel



Thank you for your purchase.